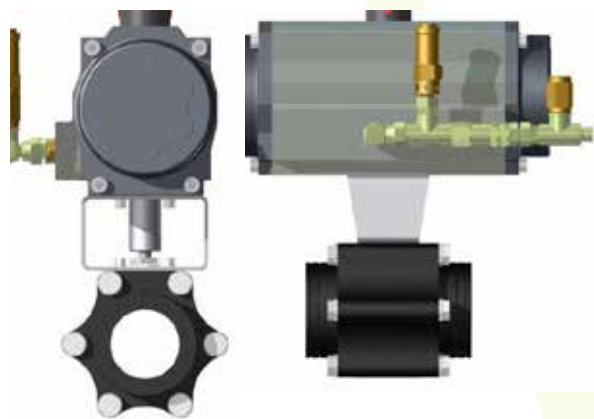


# PROINERT® SELECTOR VALVE ASSEMBLY

## (DOUBLE ACTING)



### Product Overview

Selector valve arrangements can be used with the ProInert Fire Extinguishing System. The Selector Valve allows a single agent supply to be utilized for protection of multiple hazards, reducing the total number of cylinders required to protect a site.

*Note: When protecting multiple hazards with a single agent source, each hazard will require its own Selector Valve sized for the application.*

Special considerations shall be made when using a selector valve controlled system to protect adjacent hazards that may simultaneously become involved in a fire.

The Selector Valve body is available in a carbon steel finish. The unit consists of a ball-valve that blocks agent flow until the valve has been activated. Selector Valves are available in 25 mm, 40 mm, 50 mm, 80 mm, 100mm, 150mm and 200mm sizes.

Each Selector Valve is equipped with a Valve Position Monitor that provides a visual indication of the status of the valve (open or closed). Electrical position indicators are available as an optional extra.

The Selector Valve Assembly can be pneumatically operated by either a ProInert Primary Actuation Package (P/N IG71-118) or a ProInert Secondary Actuation Package (P/N IG71-119).

Activating the Actuator will result in the release of Nitrogen from the Nitrogen Cylinder and subsequently pneumatically opening the Selector Valve. Each Selector Valve Assembly comes equipped with the Selector Valve and its actuator with relief / pop-off valve.

The selector valve has a actuation pressure of 8.0 bar. The actuator is double acting, hence it requires pressure to operate and close.

#### NON-RETURN VALVE KIT – SELECTOR VALVE ACTUATION (P/N IG71-028)

The Non-return Valve kits are used in the Selector Valve pneumatic actuation line. The correct placement of these kits within the actuation lines ensures that the required numbers of cylinders from a central bank are operated. The kits also protect against unwanted back pressure within the actuation line. The design of the Non-return Valve is such that it can be mounted in any orientation and does not require any maintenance.

The kit comprises of a 1/4" Non-return Valve, a 1/4" Equal Tee and two sealing washers.

The rating for the 1/4" Non-return Valve has a nominal Free Flow Diameter of 5.5mm with a working pressure of 180 bar and a minimum cracking pressure of 0.35 bar.

#### MULTIPLE HAZARDS WITH DIFFERENT VOLUMES

In cases where a bank of cylinders is used to protect multiple hazards with different volumes, a configuration of solenoid actuators and slave actuators may be utilized to control the cylinder bank and the agent flow. A typical example of such a system is shown below.

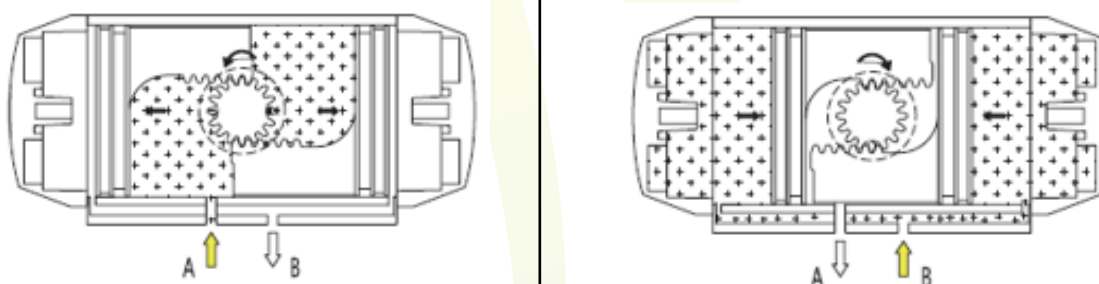
## MULTIPLE HAZARDS WITH IDENTICAL VOLUMES

When utilizing multiple cylinders to protect multiple hazards with identical volumes it is necessary to use Selector Valves to divert the flow of agent into the activated hazard. The selector valves may be activated electronically or manually by pneumatically connecting to the solenoid actuator provided with the selector valve. The selector valves may also be activated by pneumatically connecting to a slave actuator, which in turn is pneumatically connected to a solenoid actuator.

## OPERATIONS

The standard rotation is clockwise to close; counter-clockwise rotation is obtained when A is pressurised.

**Double Acting Operations Function (Standard Rotation) Top View**



**CCW**

Air supplied to Port A forces the pistons apart and towards end positions, with exhaust air exiting at Port B, a counter-clock rotation is obtained

**CW**

Air supplied to Port B force the pistons together with exhaust air exiting at Port A, a clockwise rotation is obtained

Part Number	Description	Thread Size and Type
FPT-0171D	Selector Valve 25mm	25mm BSP Female
FPT-0172D	Selector Valve 32mm	32mm BSP Female
FPT-0173D	Selector Valve 40mm	40mm BSP Female
FPT-0174D	Selector Valve 50mm	50mm BSP Female
FPT-0175D	Selector Valve 80mm	80mm Flanged ANSI (Class 300)
FPT-0176D	Selector Valve 100mm	100mm Flanged ANSI (Class 300)
FPT-0177D	Selector Valve 150mm	150mm Flanged ANSI (Class 300)
FPT-0178D	Selector Valve 200mm	200mm Flanged ANSI (Class 300)