

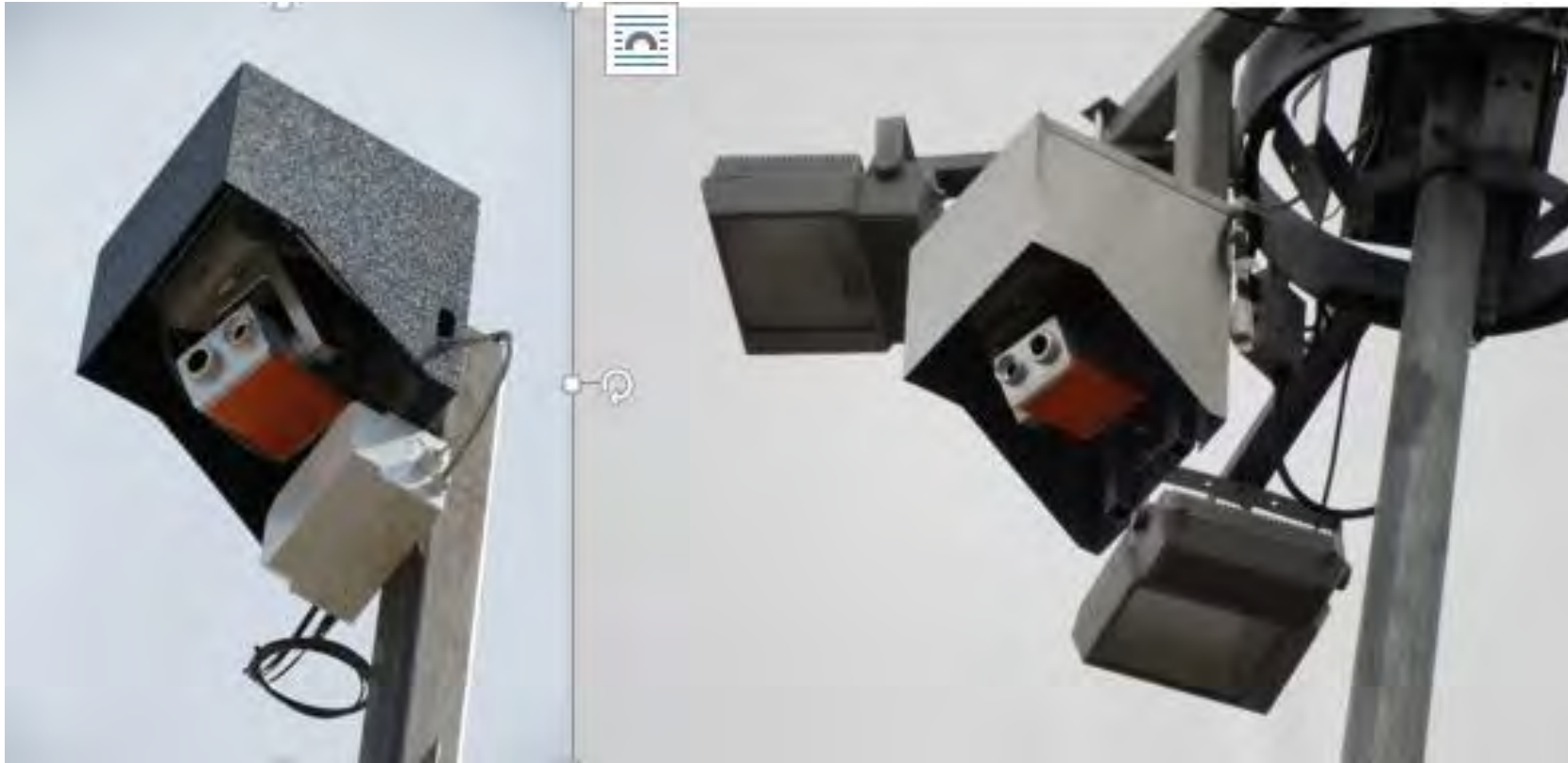


PYROsmart applications outdoor storage yards

Outdoor storage: PYROsmart top down installation on a mast with mounting box



Outdoor detection: PYROsmart top down installation on a mast with mounting box



Outdoor detection: PYROsmart top down installation on a mast with mounting box



Paper industry: *PYROsmart out door shelter*



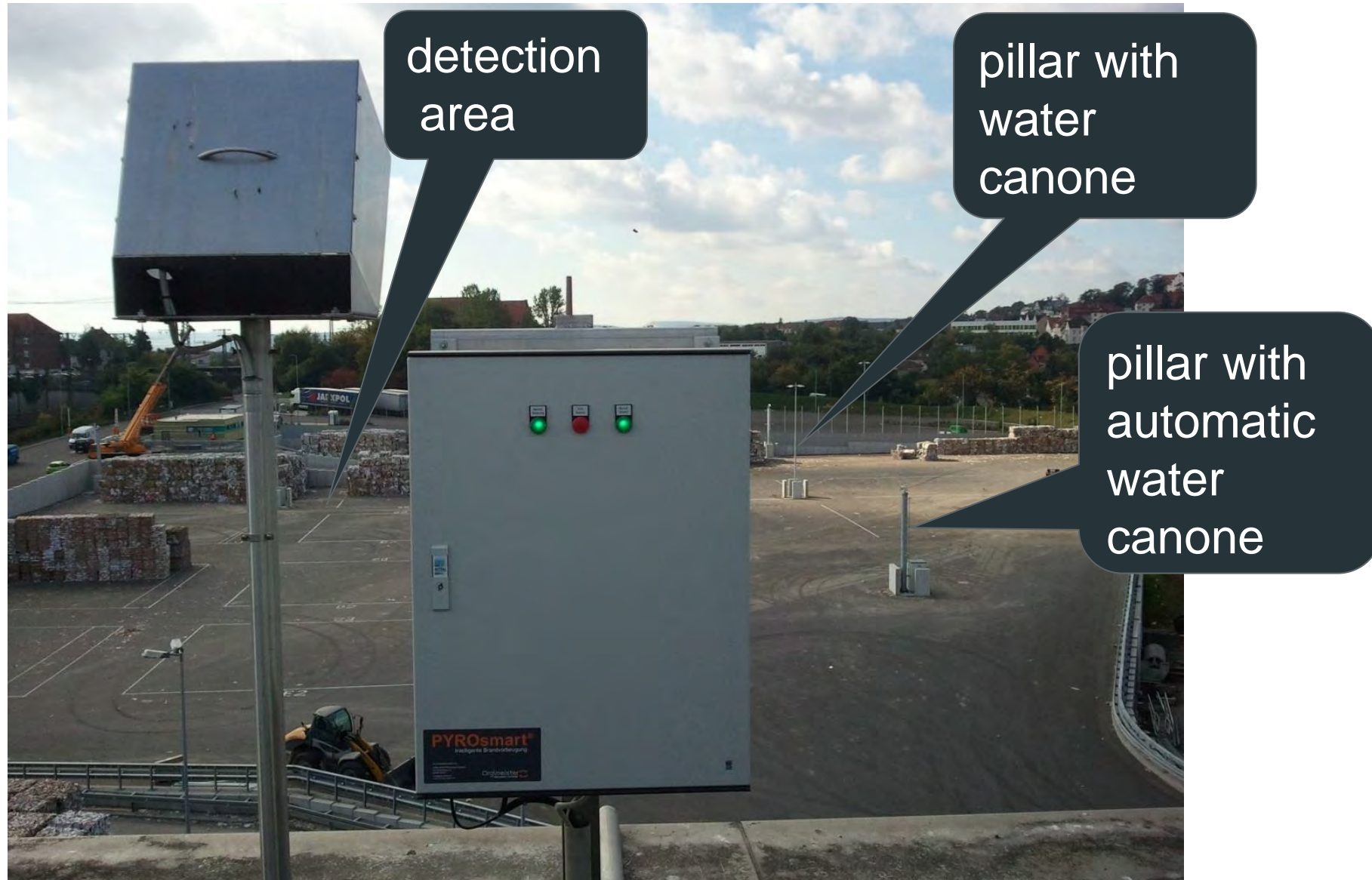
Paper industry: *out side storage and view into the PYROsmart shelter*



Paper industry: *detection area at a out side paperbale storage and PYROsmart shelter.*



Paper industry: *backside of PYROsmart housing and switch board, on the roof of a hall*

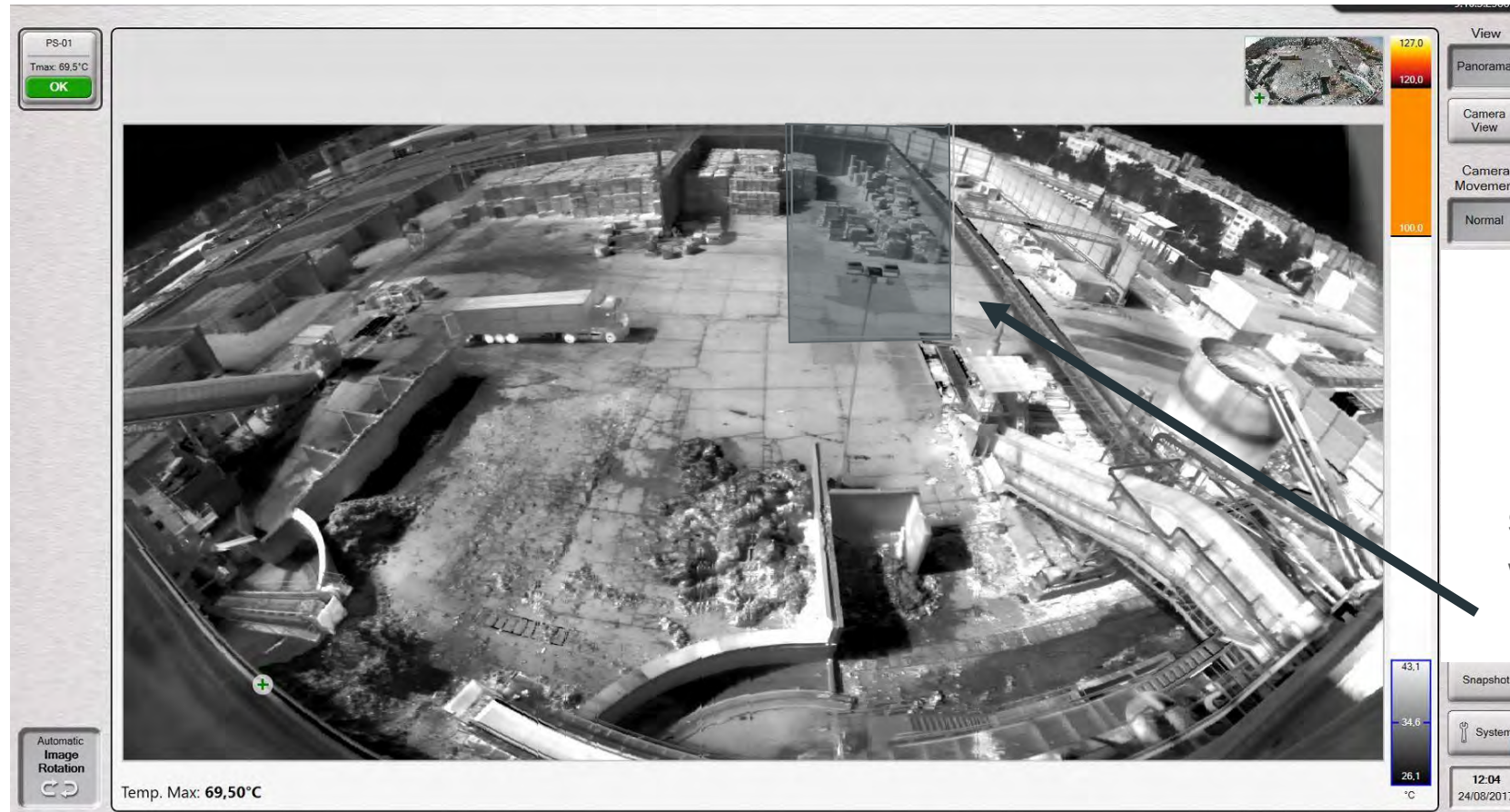




Paper industry:

*water canon for automatic aimed
shot extinguishing, controlled by
PYROsmart*

Patented temperature monitoring – IR detection



IR-
panoramic
image

scanning
window

Here we see an IR panorama detection from a production building to an outdoor storage place with a distance of 250 m

Patented temperature monitoring – video panoramic detection

PSTerminal 10

Orglmeister INFRAROT SYSTEME

PYRO/mart Terminal 10.8

OK

Auto-Rotation

EDIFICIO PASTAS PS-01
69°C
OK

EDIFICIO LODOS PS-02
55°C
OK

FACTORIA 2 NORTE PS-03
62°C
OK

FACTORIA 2 SUR PS-04
56°C
OK

EDIFICIO LODOS PS-02

Mode
Auto
Manual

Speed
Normal
Fast

Functions
View
Snapshot
Areas

Temperature Range 70°C

45

12 | 65

-20

Temperature Range Control Mode

Auto Max / Min

Auto Level

Manual

Infrared Heating

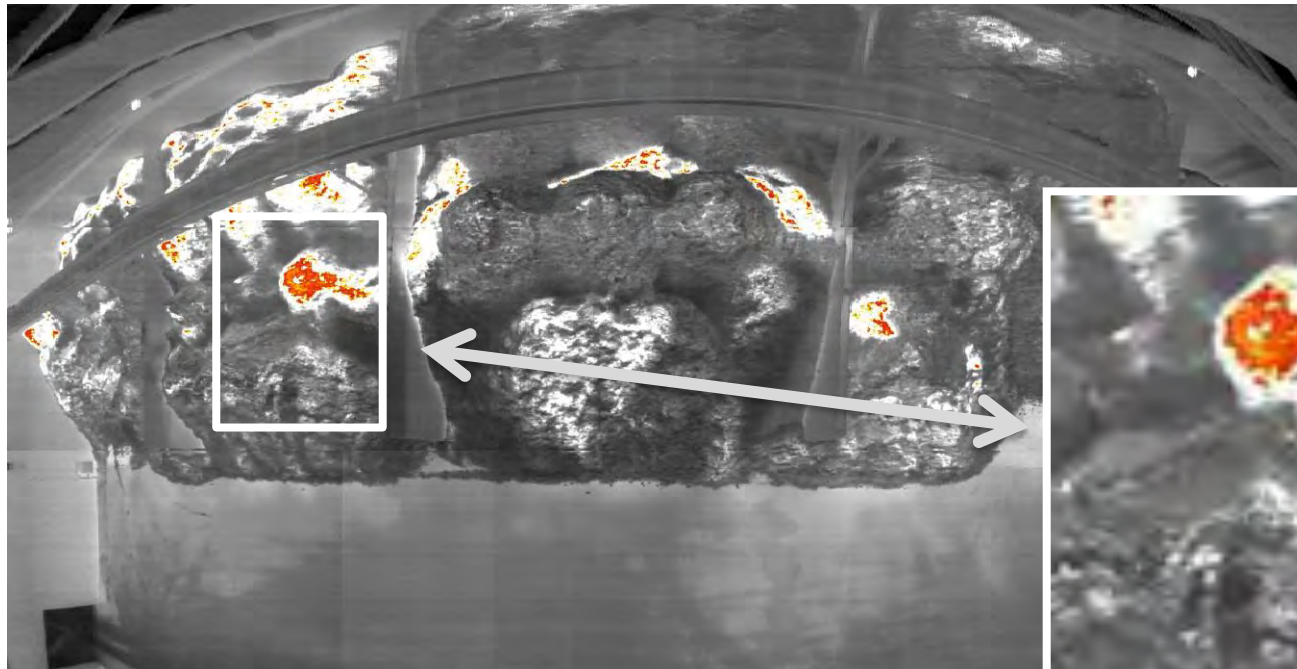
100/0 90/10 80/20 70/30 60/40 50/50 40/60 30/70 20/80 10/90 0/100

Video Edges

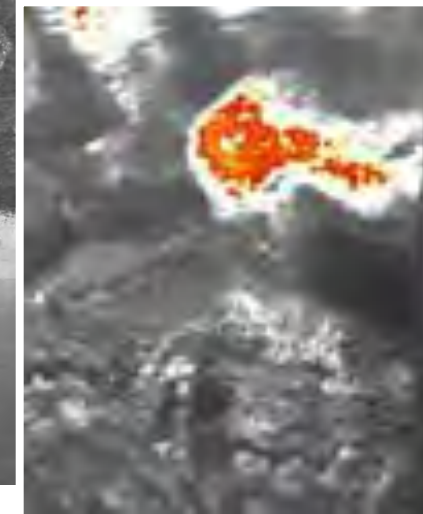
55°C 12°C

Apps

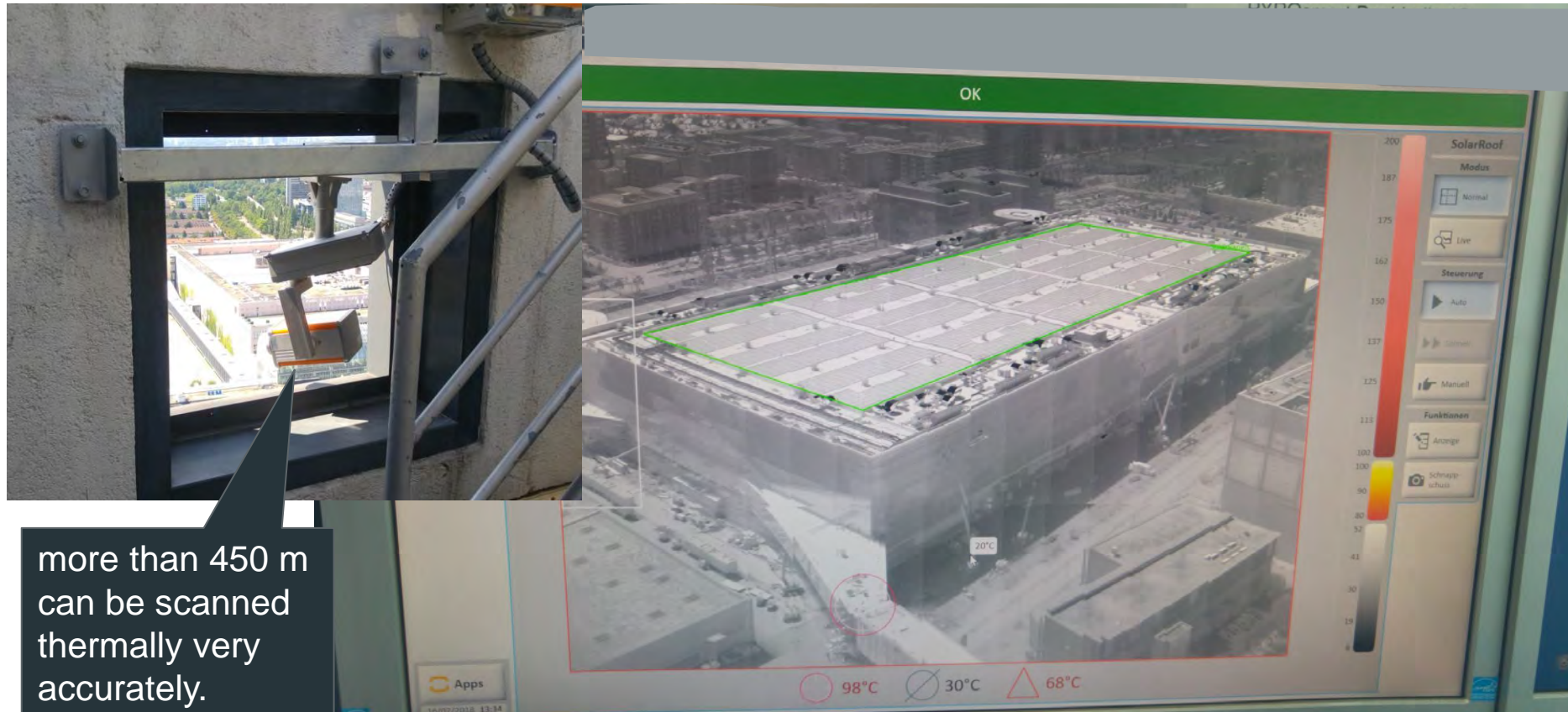
IR panoramic detection – how does it work



Field of view
24° x 19°



PYROsmart application examples



more than 450 m
can be scanned
thermally very
accurately.

This hall roof with 5.200 solar modules is detonated from a high-rise building from a distance of 300 m. The distance to the outermost detection point is 450 m

Outdoor storage space for tyres: *patented PYROsmart thermal panoramic image*

The current IR scan window, with a resolution of 320x240 measuring points.

The permanent scanning process is going on in stripes.

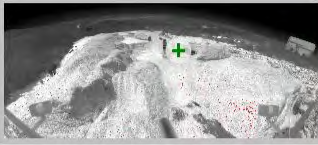

Detection area, maximum distance 250 m

Outdoor storage space for tyres: *patented PYROsmart video panoramic image*

Orglmeister INFRAROT SYSTEME Version: 9.2.0 PYROsmart Terminal

Kamera A1: OK

Kamera A1
Tmax: 110,9°C
OK



Ansicht
Panorama
Kamera-Ansicht

Kamera-Bewegung
Normal
Schnell
Stop

Player
Ereignisse
System

Temp. Max: **110,86°C**

13:29
18.07.2013

110,9
55,0
53,5
35,5
17,5
°C

Automatischer Bildwechsel

Out door depot for tyres:
patented PYROsmart direct view with video an thermal image in parallel

Orglmeister INFRAROT SYSTEME Version: 9.2.0 PYROsmart® Terminal

Kamera A1: OK

Kamera A1
Tmax: 118,9°C
OK

Ansicht
Panorama
Kamera-Ansicht

Kamera-Bewegung
Normal
Schnell
Stop

Player
Ereignisse
System
13:22
18.07.2013

Zoom: Aus 25% 50% 75% 100%

Temp. Max: **118,91°C** Autofokus

118,9
55,0
52,9
34,9
16,9 °C

Outdoor storage for wood recycling: *patented PYROsmart thermal panoramic image*

The screenshot displays the PYROsmart software interface. The main window shows a thermal panoramic image of an outdoor wood recycling storage area. The interface includes a top bar with the Orglmeister logo and the text 'PYROsmart Terminal 9.9.5.21387'. On the left, there is a 'PYROsmart' status box showing 'Tmax: 43,8°C' and an 'OK' button. Below this is an 'Automatic Image Rotation' button. The main view shows a thermal image with a color scale on the right ranging from 13,0 to 97,0. A temperature reading of 20,60 °C is visible on the image. The right sidebar contains buttons for 'View' (Panorama, Camera View), 'Camera Movement' (Normal, Fast, Stop), 'Player', 'Events', 'Save Image', and 'System'. The bottom right corner shows the time '15:36' and date '30.09.2014'. A callout box points to the main image with the text: 'Current IR scan window, with a resolution of 320x240 measuring points.'

Outdoor storage wood recycling: *alarm event list*

PYROsmart

Orglmeister

PYROsmart® Terminal
9.9.5.21387

PYROsmart
Tmax: 43.8°C
OK



View
Panorama

Fire Alarm in PYROsmart - 30.09.2014 15:14



Type	Date	Description
Fire Alarm in PYROsmart	30.09.2014 - 15:14:50	Fire Alarm in PYROsmart
Fire Alarm in PYROsmart	30.09.2014 - 13:29:31	Fire Alarm in PYROsmart
Fire Alarm in PYROsmart	30.09.2014 - 13:18:27	Fire Alarm in PYROsmart
Fire Alarm in PYROsmart	30.09.2014 - 10:57:00	Fire Alarm in PYROsmart
Fire Alarm in PYROsmart	30.09.2014 - 10:47:37	Fire Alarm in PYROsmart
Fire Alarm in PYROsmart	30.09.2014 - 10:46:16	Fire Alarm in PYROsmart
Fire Alarm in PYROsmart	29.09.2014 - 18:48:37	Fire Alarm in PYROsmart
Pre Alarm in PYROsmart	29.09.2014 - 18:40:29	Pre Alarm in PYROsmart
Pre Alarm in PYROsmart	29.09.2014 - 18:27:17	Pre Alarm in PYROsmart
Pre Alarm in PYROsmart	25.09.2014 - 18:56:32	Pre Alarm in PYROsmart
Fire Alarm in PYROsmart	25.09.2014 - 18:54:43	Fire Alarm in PYROsmart
Fire Alarm in PYROsmart	24.09.2014 - 19:06:00	Fire Alarm in PYROsmart
Pre Alarm in PYROsmart	24.09.2014 - 19:05:50	Pre Alarm in PYROsmart
Fire Alarm in PYROsmart	24.09.2014 - 18:55:28	Fire Alarm in PYROsmart
Pre Alarm in PYROsmart	21.09.2014 - 19:38:51	Pre Alarm in PYROsmart
Pre Alarm in PYROsmart	21.09.2014 - 19:10:43	Pre Alarm in PYROsmart
Fire Alarm in PYROsmart	21.09.2014 - 19:03:41	Fire Alarm in PYROsmart
Pre Alarm in PYROsmart	21.09.2014 - 19:01:54	Pre Alarm in PYROsmart
Fire Alarm in PYROsmart	12.09.2014 - 19:26:59	Fire Alarm in PYROsmart
Pre Alarm in PYROsmart	12.09.2014 - 19:25:09	Pre Alarm in PYROsmart
Pre Alarm in PYROsmart	12.09.2014 - 19:17:59	Pre Alarm in PYROsmart
Fire Alarm in PYROsmart	12.09.2014 - 19:16:21	Fire Alarm in PYROsmart
Pre Alarm in PYROsmart	12.09.2014 - 19:16:08	Pre Alarm in PYROsmart
Fire Alarm in PYROsmart	12.09.2014 - 19:14:29	Fire Alarm in PYROsmart
Pre Alarm in PYROsmart	12.09.2014 - 19:12:41	Pre Alarm in PYROsmart
Pre Alarm in PYROsmart	11.09.2014 - 19:45:41	Pre Alarm in PYROsmart
Fire Alarm in PYROsmart	11.09.2014 - 19:16:01	Fire Alarm in PYROsmart
Pre Alarm in PYROsmart	10.09.2014 - 19:39:15	Pre Alarm in PYROsmart
Fire Alarm in PYROsmart	10.09.2014 - 19:16:35	Fire Alarm in PYROsmart
Pre Alarm in PYROsmart	08.09.2014 - 19:23:14	Pre Alarm in PYROsmart
Fire Alarm in PYROsmart	08.09.2014 - 19:21:35	Fire Alarm in PYROsmart
Pre Alarm in PYROsmart	08.09.2014 - 19:19:47	Pre Alarm in PYROsmart
Pre Alarm in PYROsmart	07.09.2014 - 19:42:17	Pre Alarm in PYROsmart
Fire Alarm in PYROsmart	07.09.2014 - 19:19:37	Fire Alarm in PYROsmart
Pre Alarm in PYROsmart	03.09.2014 - 19:29:43	Pre Alarm in PYROsmart
Fire Alarm in PYROsmart	02.09.2014 - 19:27:43	Fire Alarm in PYROsmart
Pre Alarm in PYROsmart	12.08.2014 - 02:05:59	Pre Alarm in PYROsmart
Pre Alarm in PYROsmart	01.08.2014 - 12:45:40	Pre Alarm in PYROsmart
Pre Alarm in PYROsmart	01.08.2014 - 12:37:47	Pre Alarm in PYROsmart
Fire Alarm in PYROsmart	01.08.2014 - 12:31:45	Fire Alarm in PYROsmart
Pre Alarm in PYROsmart	01.08.2014 - 12:31:36	Pre Alarm in PYROsmart
Fire Alarm in PYROsmart	01.08.2014 - 12:28:33	Fire Alarm in PYROsmart
Fire Alarm in PYROsmart	01.08.2014 - 11:50:18	Fire Alarm in PYROsmart
Fire Alarm in PYROsmart	01.08.2014 - 11:32:33	Fire Alarm in PYROsmart
Fire Alarm in PYROsmart	01.08.2014 - 11:30:38	Fire Alarm in PYROsmart
Pre Alarm in PYROsmart	31.07.2014 - 17:25:05	Pre Alarm in PYROsmart
Fire Alarm in PYROsmart	31.07.2014 - 17:25:04	Fire Alarm in PYROsmart

Detected, located and immediatly signaled:
Hotspot with arlarm temperatur.

Early enough to prevent a fire!





Temperature monitoring and automatic extinguishing

Examples of applications
installations and setup,

where PYROsmart controls the
automatic extinguishing.





Outdoor paper storage,
– 13.000 sqm – Two
PYROsmart FS needed
to control and head for
4 water canons.



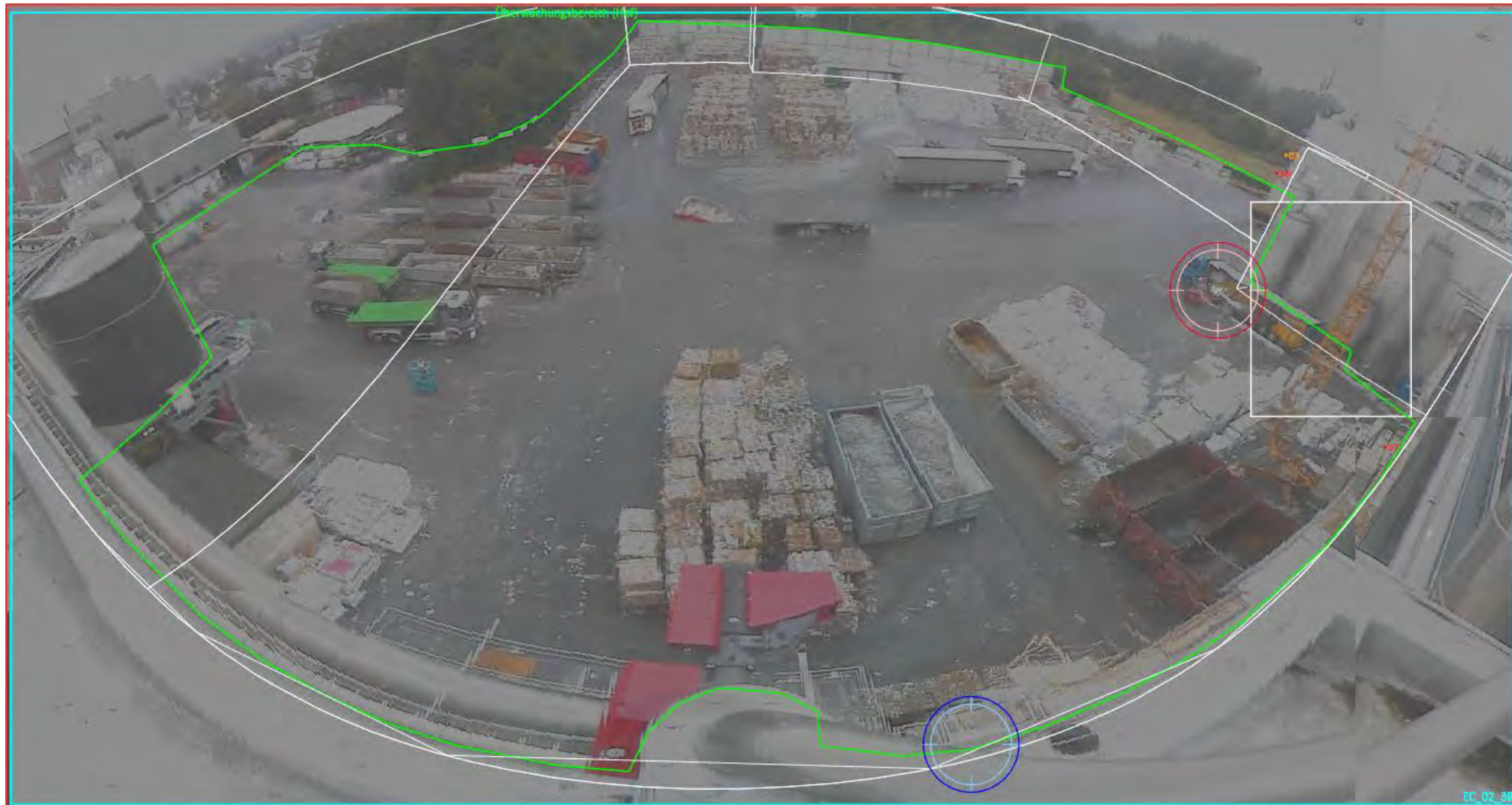
Precise consideration of the 3D geometry:

full panoramic image and geometric outline to guarantee highest accuracy to target upcoming hotspots exactly with the water cannons



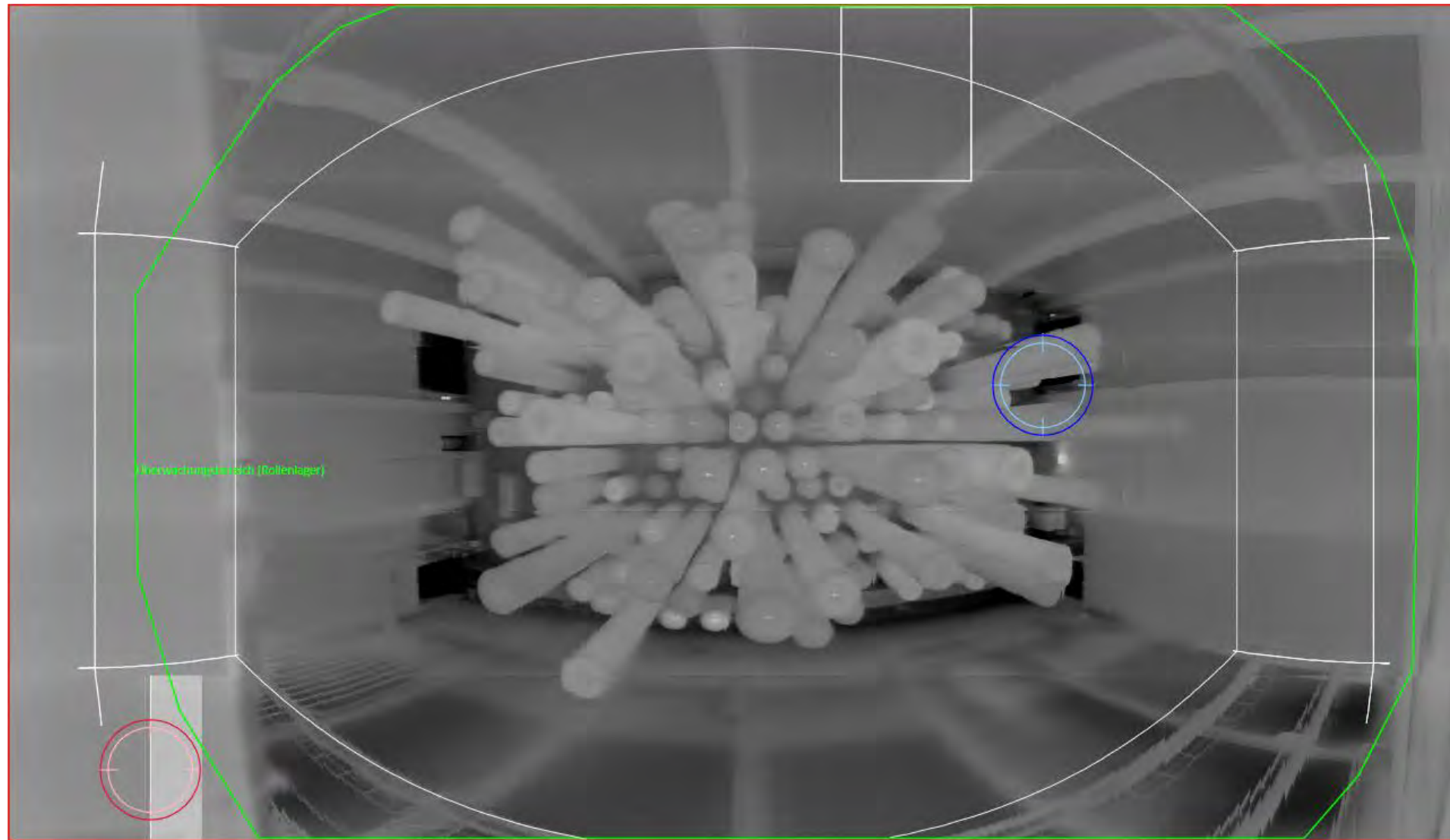
Full panoramic image with infrared and video overlay

and geometric outline to guarantee highest accuracy to target upcoming hotspots with the water cannons

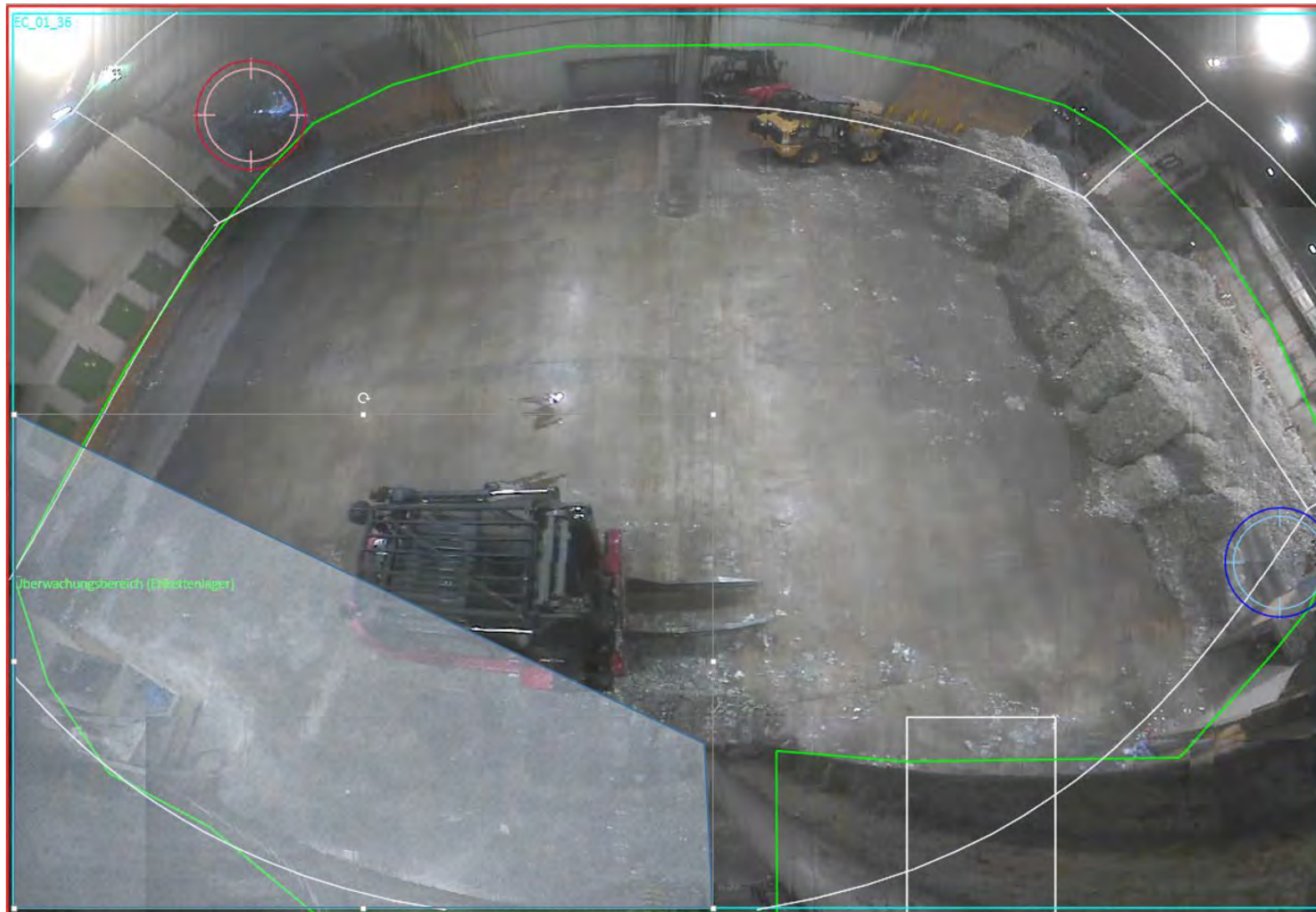


Finished goods warehouse with paper rolls:

full panoramic image and geometric outline to



Paper input hall: full panoramic image and geometric outline



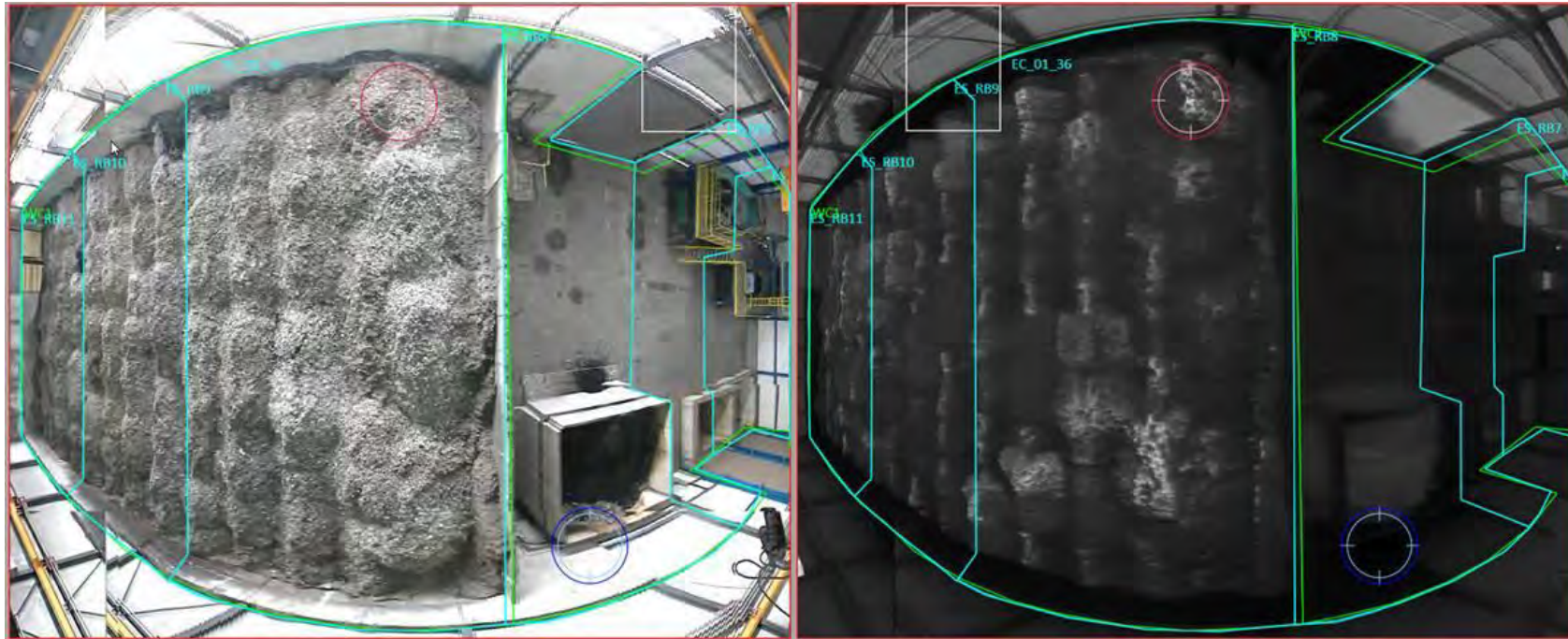
Additional slides:
Indoor PYROsmart detection.



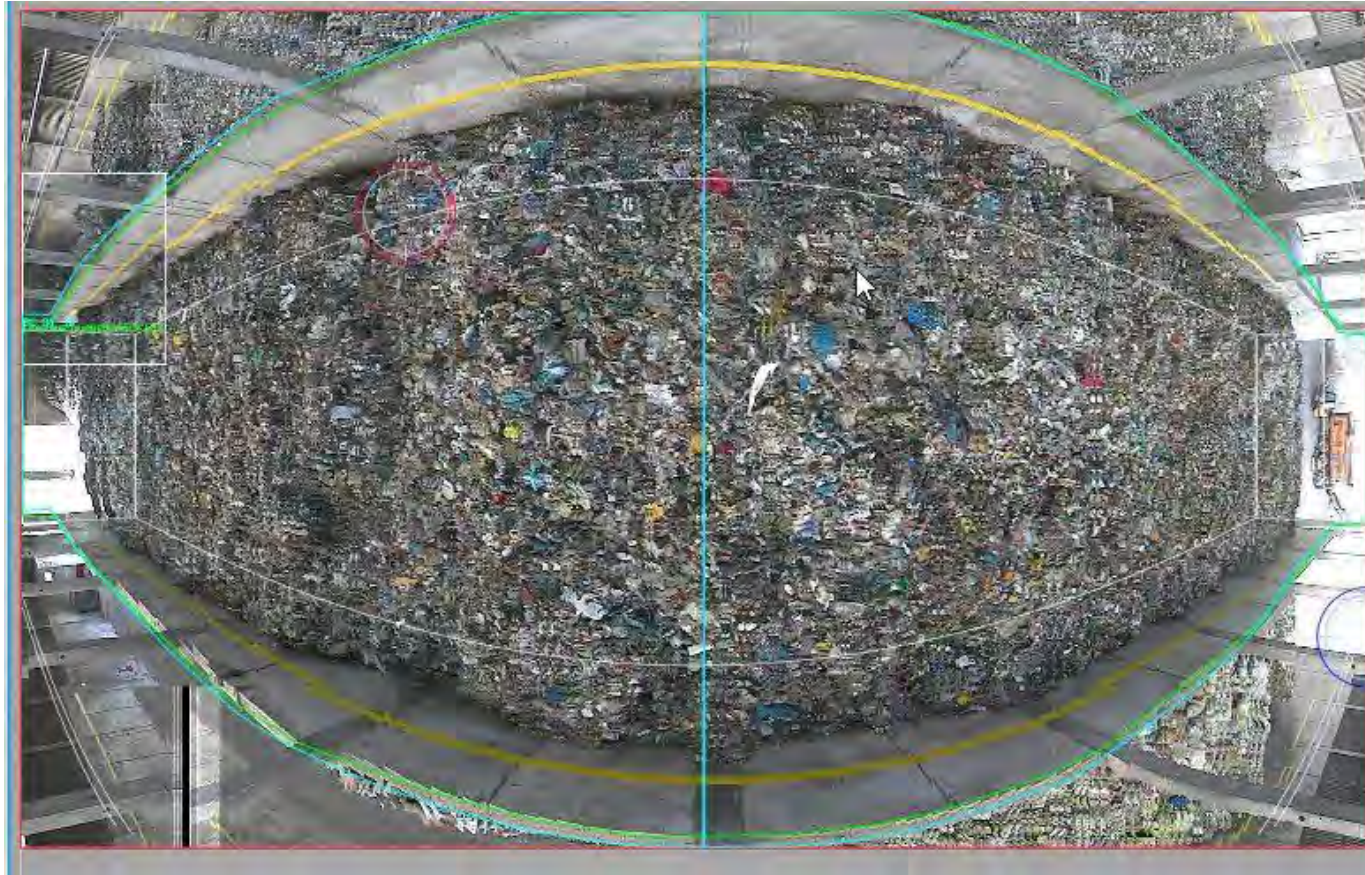
PYROsmart application examples

PYROsmart® aimed extinguishing at an RDF-storage

3D analysis and set up of different alarm zones ensure precise deletion

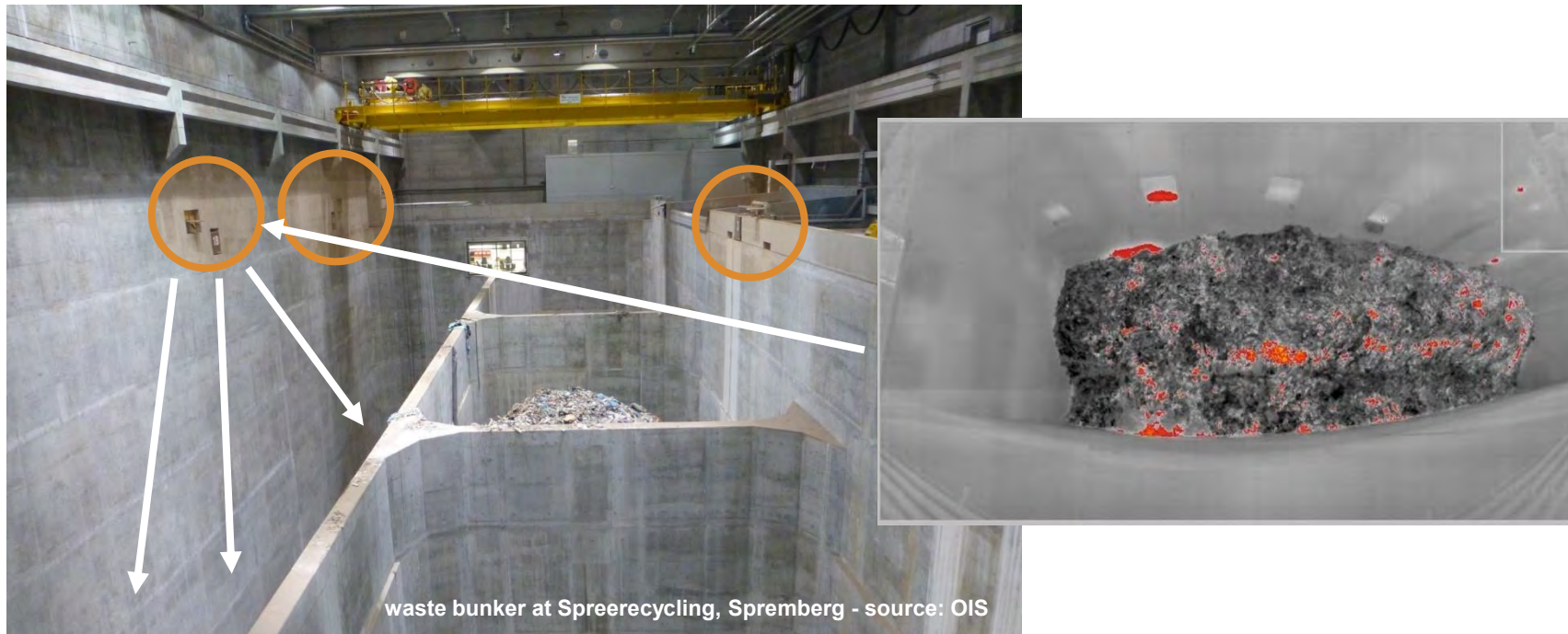


Patented temperature monitoring – IR panoramic video view

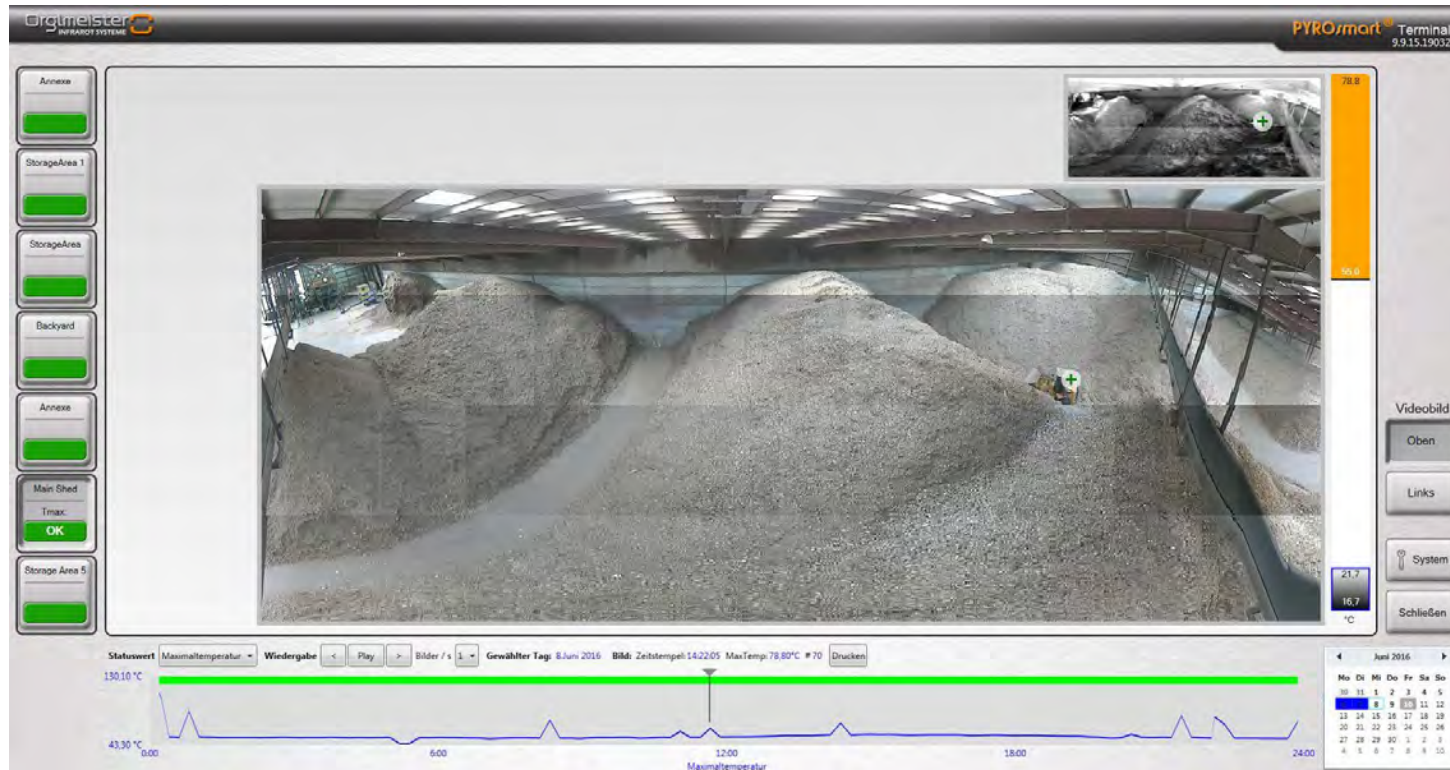


3D analysis,
RDF input hall:
video-panoramic-
scan

Application examples

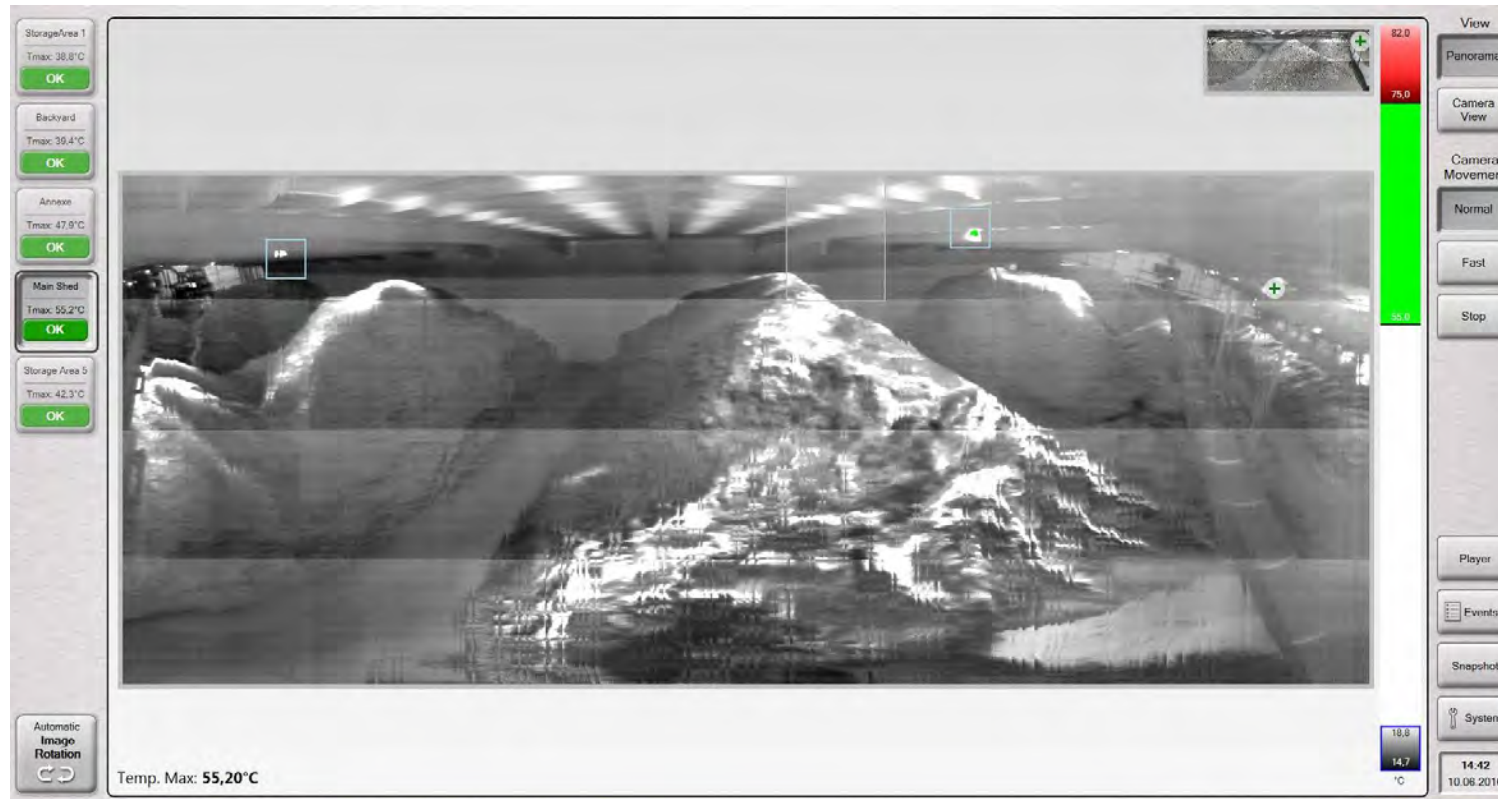


PYROsmart application examples



RDF- Storage : Panoramic PYROsmart® video image

PYROsmart application examples



RDF- Storage : Panoramic PYROsmart® thermal image

PYROsmart application examples

The screenshot displays the PYROsmart Terminal 10.5 software interface. The central part of the screen shows a thermal camera view of a large industrial facility, likely a waste incineration plant, with a large pile of waste. A green outline labeled "Alarm Area LB4" is visible on the left side of the camera view. A red crosshair is positioned on the left side of the camera view, and a white rectangle is positioned in the center. The top of the interface has a green bar with the text "OK".

On the left side, there is a vertical menu with four PYROsmart units:

- PYROsmart 1: 43°C
- PYROsmart 2: 109°C
- PYROsmart 3: 39°C
- PYROsmart 4: 108°C (highlighted with a blue border)

Each unit has an "OK" button and a star icon. Below this menu is an "Apps" button.

On the right side, there is a control panel for "PYROsmart 4". It includes a "Modus" section with "Normal" and "Live" buttons. A "Steuerung" section has "Auto", "Schnell", and "Manuell" buttons. A "Funktionen" section has "Anzeige", "Schnappschuss", and "Geometrie" buttons. A "Temperature Range Control Mode" section has "Auto Max / Min", "Auto Niveau", and "Manuell" buttons. A vertical temperature scale is also present, ranging from -1 to 160°C.

At the bottom of the interface, there is a row of buttons for "Infrarot" and "Aufheizung" (100/0, 90/10, 80/20, 70/30, 60/40, 50/50, 40/60, 30/70, 80/20, 10/90, 0/100). Below this row are two circular indicators: one with a red border and "108°C" inside, and another with a blue border and "5°C" inside. There are also "Video" and "Kanten" options on the right side of the bottom bar.



**You want to detect your fire hazards early and reliably?
Call us or send us your requirements.**

www.pyrosmart.com - contact: vertrieb@orglmeister.de - Tel. +49 (0)6123 – 68912-0

www.fire-protection.com.au | Unit 1, 251 Ferntree Gully Road Mt Waverley VIC 3149 Australia | 1300 742 296