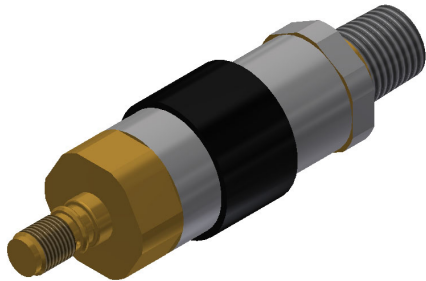


FK-5-1-12 CLEAN AGENT IMPULSE VALVE LOW PRESSURE SWITCH

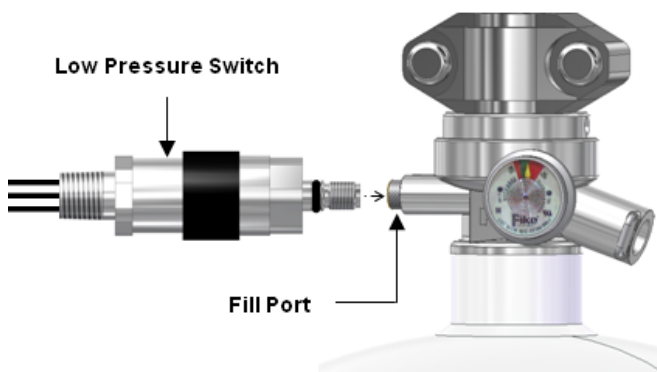


Description

The FK-5-1-12 low pressure switch (LPS) is an optional item that can be added to Impulse Valve containers for the purpose of continuously monitoring the container pressure for a low-pressure condition. If the pressure inside the container drops below 450 psig (31 bar), the LPS contacts will transfer and invoke a "Supervisory" indication on the control panel.

The LPS may be ordered along with a configured Impulse Valve container or as a separate item that can be installed on a fully pressurized container without loss of agent or pressure.

The switch is mounted in the fill port on the container valve.



Specifications

Part Number	02-15801
Temperature Limits	32 to 130°F (0 to 54°C)
Enclosure Classification	NEMA 4
Contact Rating	Single pole, double throw; 5 amps resistive, 3 amps inductive @ 30 VDC (can be wired for normally open or normally closed operation)
Body Material	Aluminum with irridite finish
Pressure Connection	M10 x 1-6G
Approximate Length	4.375" (111 mm) (including both connectors)
Electrical Connection	1/2" (15 mm) NPT
Wire Leads	(3) 18 gauge x 48" (122 cm) long Violet (C), Blue (NO), Black (NC)
Pressure Setting	450 psig (31 bar), decreasing
Weight	6.5 ounces (184 g)

Approvals

Underwriters Laboratories (UL)
Underwriters Laboratories of Canada (ULC)
Factory Mutual (FM)

For exact certification listings, please reference the respective agency web site.

NOTICE

FK-5-1-12 may **NOT** be transported through, or installed in any of the following countries: France, Germany, Italy, Japan, Mexico, South Korea, Spain, the UK, or the USA.

FK-5-1-12 is sold by Fike International SDN. Bhd.

This document is only intended to be a guideline and is not applicable to all situations. Information is subject to Fike's full disclaimer at <http://www.fike.com/disclaimer>.