
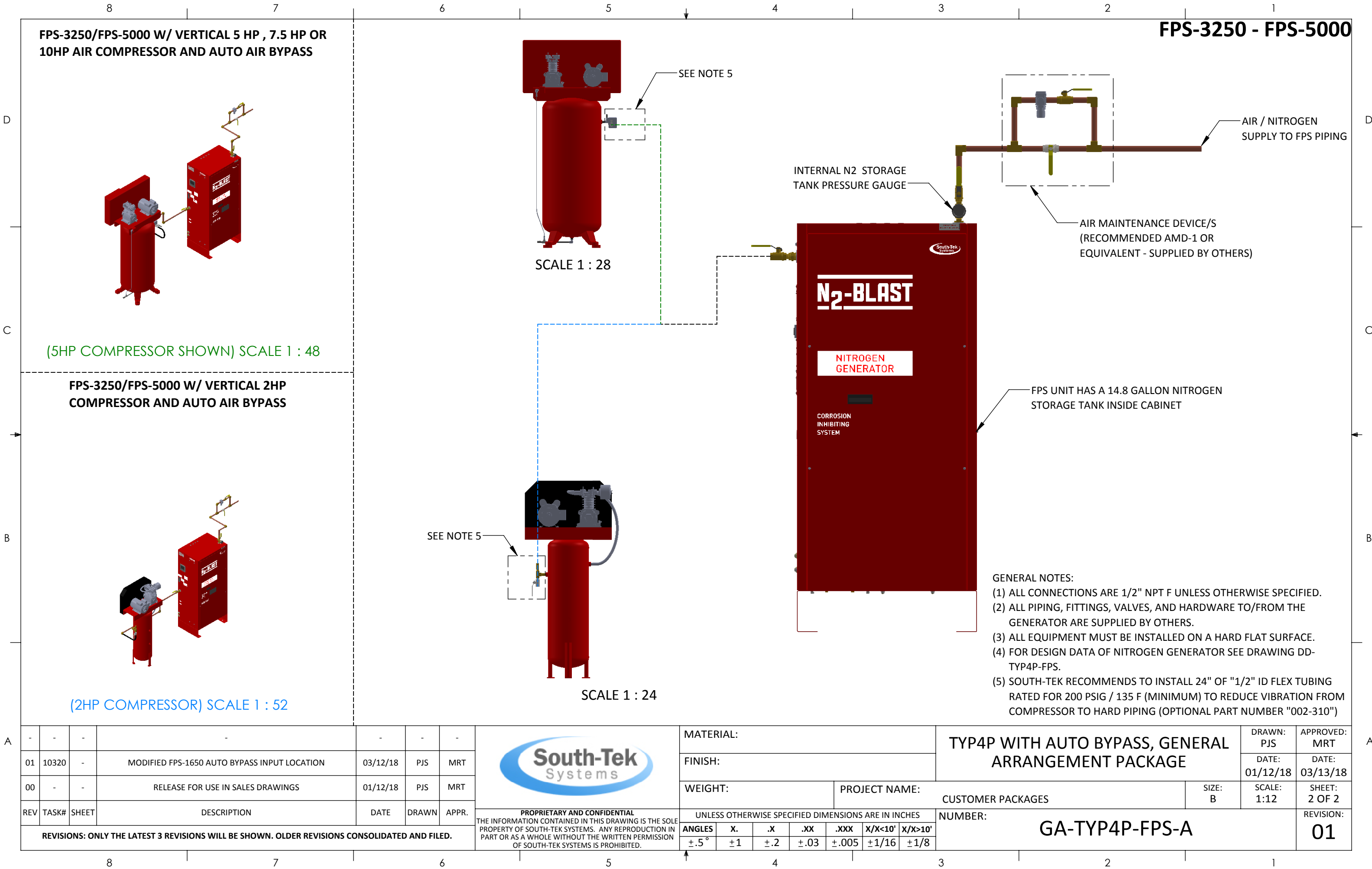



- GENERAL NOTES:
- (1) ALL CONNECTIONS ARE 1/2" NPT F UNLESS OTHERWISE SPECIFIED.
  - (2) ALL PIPING, FITTINGS, VALVES, AND HARDWARE TO/FROM THE GENERATOR ARE SUPPLIED BY OTHERS.
  - (3) ALL EQUIPMENT MUST BE INSTALLED ON A HARD FLAT SURFACE.
  - (4) FOR DESIGN DATA OF NITROGEN GENERATOR SEE DRAWING DD-TYP4P-FPS.
  - (5) SOUTH-TEK RECOMMENDS TO INSTALL 24" OF "1/2" ID FLEX TUBING RATED FOR 200 PSIG / 135 F (MINIMUM) TO REDUCE VIBRATION FROM COMPRESSOR TO HARD PIPING (OPTIONAL PART NUMBER "002-310")

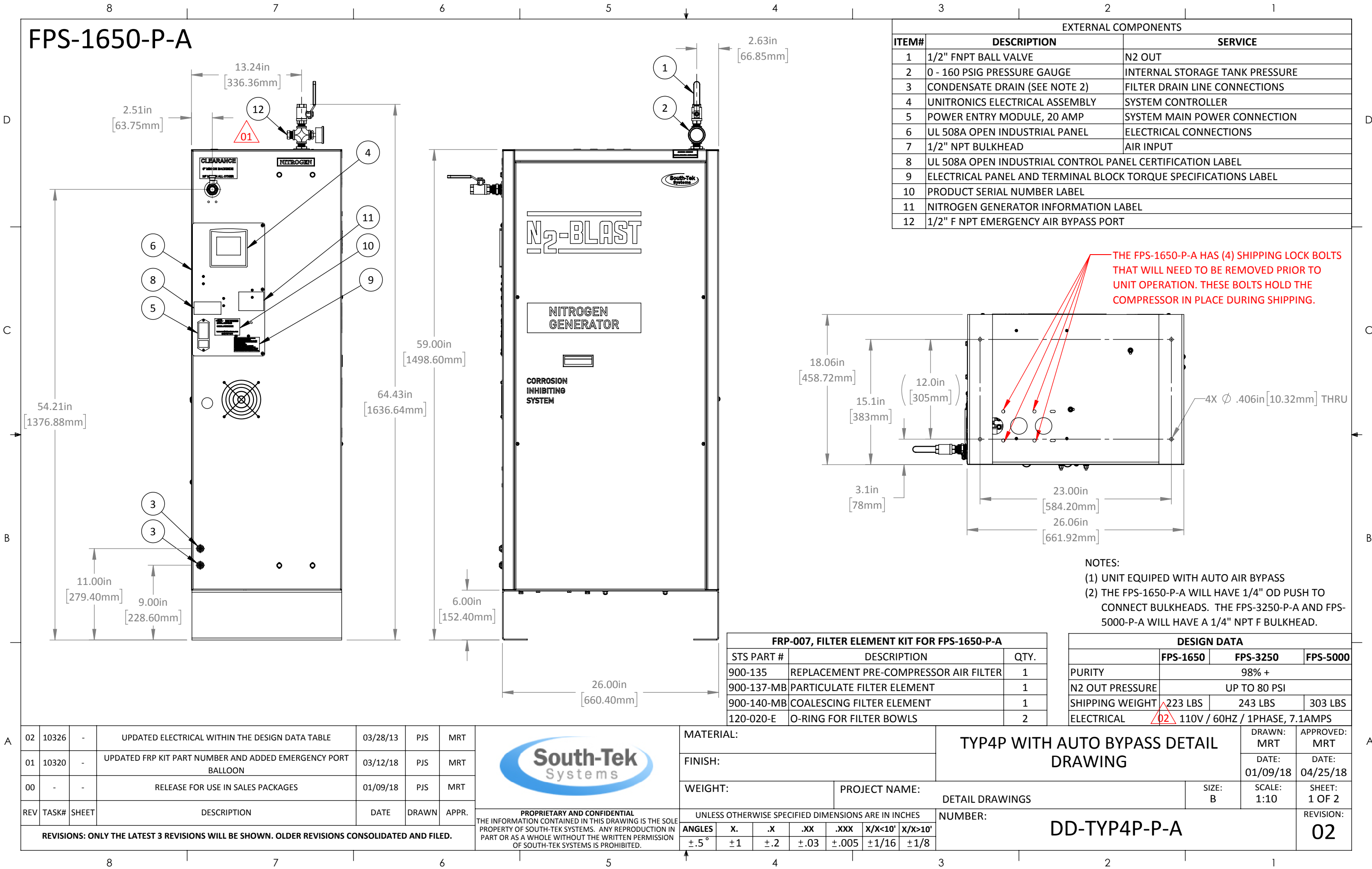
A	-	-	-	-	-	-		MATERIAL:					TYP4P WITH AUTO BYPASS, GENERAL ARRANGEMENT PACKAGE				DRAWN: PJS	APPROVED: MRT	A
	01	10320	-	MODIFIED FPS-1650 AUTO BYPASS INPUT LOCATION		03/12/18		PJS	MRT	FINISH:							DATE: 01/12/18	DATE: 03/13/18	
	00	-	-	RELEASE FOR USE IN SALES DRAWINGS		01/12/18		PJS	MRT	WEIGHT:			PROJECT NAME:			SIZE: B	SCALE: 1:12	SHEET: 1 OF 2	
	REV	TASK#	SHEET	DESCRIPTION		DATE		DRAWN	APPR.	UNLESS OTHERWISE SPECIFIED DIMENSIONS ARE IN INCHES			CUSTOMER PACKAGES				REVISION:		
	REVISIONS: ONLY THE LATEST 3 REVISIONS WILL BE SHOWN. OLDER REVISIONS CONSOLIDATED AND FILED.							THE INFORMATION CONTAINED IN THIS DRAWING IS THE SOLE PROPERTY OF SOUTH-TEK SYSTEMS. ANY REPRODUCTION IN PART OR AS A WHOLE WITHOUT THE WRITTEN PERMISSION OF SOUTH-TEK SYSTEMS IS PROHIBITED.					NUMBER:  GA-TYP4P-FPS-A				01		
							ANGLES					X.	.X	.XX	.XXX	X/X<10'	X/X>10'		
							±.5°					±1	±.2	±.03	±.005	±1/16	±1/8		



-	-	-	-	-	-	-
01	10320	-	MODIFIED FPS-1650 AUTO BYPASS INPUT LOCATION	03/12/18	PJS	MRT
00	-	-	RELEASE FOR USE IN SALES DRAWINGS	01/12/18	PJS	MRT
REV	TASK#	SHEET	DESCRIPTION	DATE	DRAWN	APPR.
REVISIONS: ONLY THE LATEST 3 REVISIONS WILL BE SHOWN. OLDER REVISIONS CONSOLIDATED AND FILED.						

	MATERIAL:		TYP4P WITH AUTO BYPASS, GENERAL ARRANGEMENT PACKAGE					DRAWN: PJS	APPROVED: MRT	
	FINISH:							DATE: 01/12/18	DATE: 03/13/18	
	WEIGHT:		PROJECT NAME:					SIZE: B	SHEET: 2 OF 2	
<b>PROPRIETARY AND CONFIDENTIAL</b> THE INFORMATION CONTAINED IN THIS DRAWING IS THE SOLE PROPERTY OF SOUTH-TEK SYSTEMS. ANY REPRODUCTION IN PART OR AS A WHOLE WITHOUT THE WRITTEN PERMISSION OF SOUTH-TEK SYSTEMS IS PROHIBITED.	UNLESS OTHERWISE SPECIFIED DIMENSIONS ARE IN INCHES					NUMBER:			GA-TYP4P-FPS-A	REVISION:  01
	ANGLES	X.	.X	.XX	.XXX	X/X<10'	X/X>10'			
	±.5°	±1	±.2	±.03	±.005	±1/16	±1/8			

FPS-1650-P-A



EXTERNAL COMPONENTS		
ITEM#	DESCRIPTION	SERVICE
1	1/2" FNPT BALL VALVE	N2 OUT
2	0 - 160 PSIG PRESSURE GAUGE	INTERNAL STORAGE TANK PRESSURE
3	CONDENSATE DRAIN (SEE NOTE 2)	FILTER DRAIN LINE CONNECTIONS
4	UNITRONICS ELECTRICAL ASSEMBLY	SYSTEM CONTROLLER
5	POWER ENTRY MODULE, 20 AMP	SYSTEM MAIN POWER CONNECTION
6	UL 508A OPEN INDUSTRIAL PANEL	ELECTRICAL CONNECTIONS
7	1/2" NPT BULKHEAD	AIR INPUT
8	UL 508A OPEN INDUSTRIAL CONTROL PANEL CERTIFICATION LABEL	
9	ELECTRICAL PANEL AND TERMINAL BLOCK TORQUE SPECIFICATIONS LABEL	
10	PRODUCT SERIAL NUMBER LABEL	
11	NITROGEN GENERATOR INFORMATION LABEL	
12	1/2" F NPT EMERGENCY AIR BYPASS PORT	

THE FPS-1650-P-A HAS (4) SHIPPING LOCK BOLTS THAT WILL NEED TO BE REMOVED PRIOR TO UNIT OPERATION. THESE BOLTS HOLD THE COMPRESSOR IN PLACE DURING SHIPPING.

NOTES:  
(1) UNIT EQUIPED WITH AUTO AIR BYPASS  
(2) THE FPS-1650-P-A WILL HAVE 1/4" OD PUSH TO CONNECT BULKHEADS. THE FPS-3250-P-A AND FPS-5000-P-A WILL HAVE A 1/4" NPT F BULKHEAD.

FRP-007, FILTER ELEMENT KIT FOR FPS-1650-P-A		
STS PART #	DESCRIPTION	QTY.
900-135	REPLACEMENT PRE-COMPRESSOR AIR FILTER	1
900-137-MB	PARTICULATE FILTER ELEMENT	1
900-140-MB	COALESCING FILTER ELEMENT	1
120-020-E	O-RING FOR FILTER BOWLS	2

DESIGN DATA			
	FPS-1650	FPS-3250	FPS-5000
PURITY	98% +		
N2 OUT PRESSURE	UP TO 80 PSI		
SHIPPING WEIGHT	223 LBS	243 LBS	303 LBS
ELECTRICAL	110V / 60HZ / 1PHASE, 7.1AMPS		

02	10326	-	UPDATED ELECTRICAL WITHIN THE DESIGN DATA TABLE	03/28/13	PJS	MRT
01	10320	-	UPDATED FRP KIT PART NUMBER AND ADDED EMERGENCY PORT BALLOON	03/12/18	PJS	MRT
00	-	-	RELEASE FOR USE IN SALES PACKAGES	01/09/18	PJS	MRT
REV	TASK#	SHEET	DESCRIPTION	DATE	DRAWN	APPR.
REVISIONS: ONLY THE LATEST 3 REVISIONS WILL BE SHOWN. OLDER REVISIONS CONSOLIDATED AND FILED.						

PROPRIETARY AND CONFIDENTIAL

THE INFORMATION CONTAINED IN THIS DRAWING IS THE SOLE PROPERTY OF SOUTH-TEK SYSTEMS. ANY REPRODUCTION IN PART OR AS A WHOLE WITHOUT THE WRITTEN PERMISSION OF SOUTH-TEK SYSTEMS IS PROHIBITED.

MATERIAL:

FINISH:

WEIGHT:

PROJECT NAME:

DETAIL DRAWINGS

NUMBER:

DD-TYP4P-P-A

TYP4P WITH AUTO BYPASS DETAIL DRAWING

DRAWN: MRT

DATE: 01/09/18

SCALE: 1:10

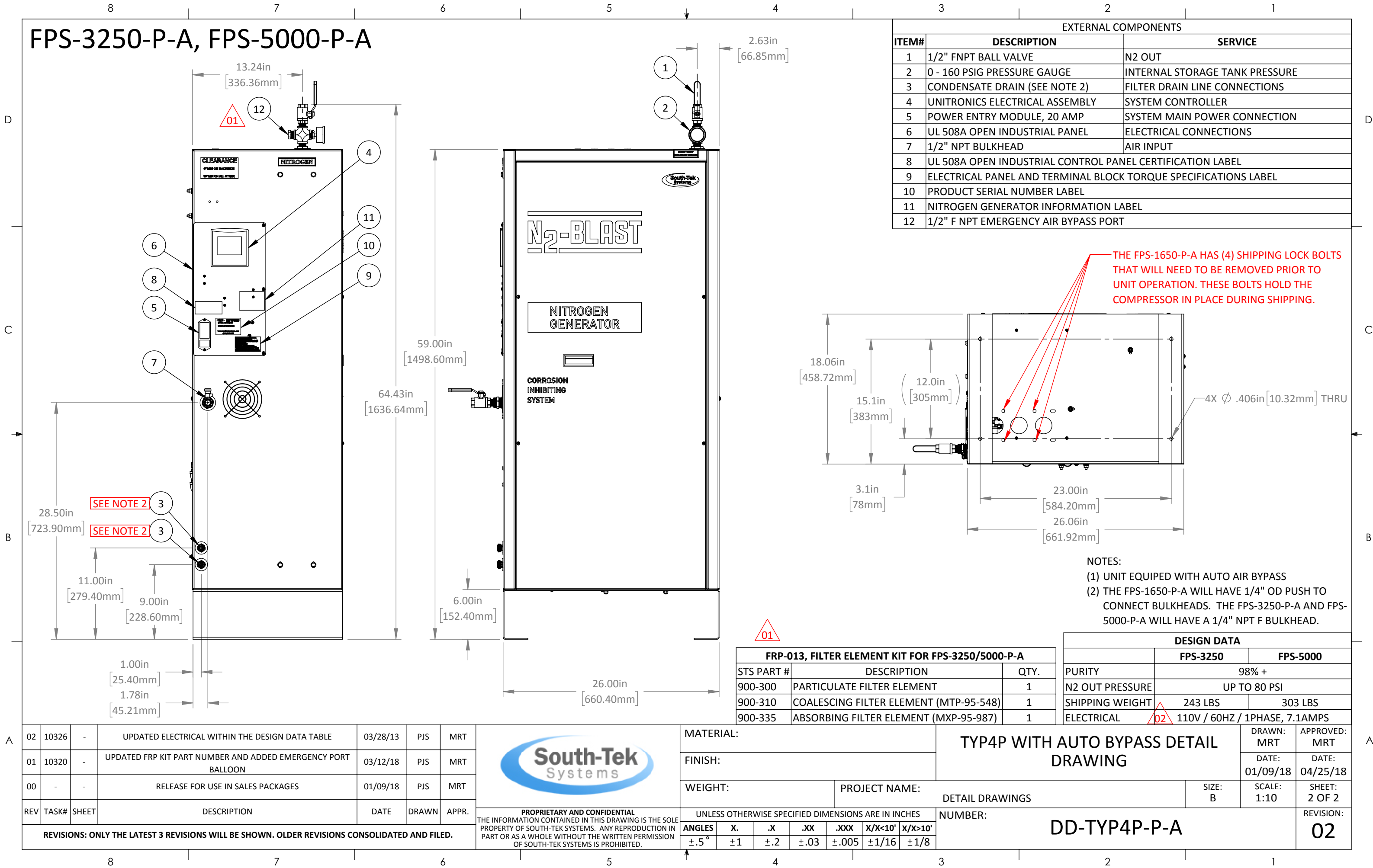
SHEET: 1 OF 2

APPROVED: MRT

DATE: 04/25/18

REVISION: 02

FPS-3250-P-A, FPS-5000-P-A



EXTERNAL COMPONENTS		
ITEM#	DESCRIPTION	SERVICE
1	1/2" FNPT BALL VALVE	N2 OUT
2	0 - 160 PSIG PRESSURE GAUGE	INTERNAL STORAGE TANK PRESSURE
3	CONDENSATE DRAIN (SEE NOTE 2)	FILTER DRAIN LINE CONNECTIONS
4	UNITRONICS ELECTRICAL ASSEMBLY	SYSTEM CONTROLLER
5	POWER ENTRY MODULE, 20 AMP	SYSTEM MAIN POWER CONNECTION
6	UL 508A OPEN INDUSTRIAL PANEL	ELECTRICAL CONNECTIONS
7	1/2" NPT BULKHEAD	AIR INPUT
8	UL 508A OPEN INDUSTRIAL CONTROL PANEL CERTIFICATION LABEL	
9	ELECTRICAL PANEL AND TERMINAL BLOCK TORQUE SPECIFICATIONS LABEL	
10	PRODUCT SERIAL NUMBER LABEL	
11	NITROGEN GENERATOR INFORMATION LABEL	
12	1/2" F NPT EMERGENCY AIR BYPASS PORT	

THE FPS-1650-P-A HAS (4) SHIPPING LOCK BOLTS THAT WILL NEED TO BE REMOVED PRIOR TO UNIT OPERATION. THESE BOLTS HOLD THE COMPRESSOR IN PLACE DURING SHIPPING.

NOTES:  
(1) UNIT EQUIPED WITH AUTO AIR BYPASS  
(2) THE FPS-1650-P-A WILL HAVE 1/4" OD PUSH TO CONNECT BULKHEADS. THE FPS-3250-P-A AND FPS-5000-P-A WILL HAVE A 1/4" NPT F BULKHEAD.

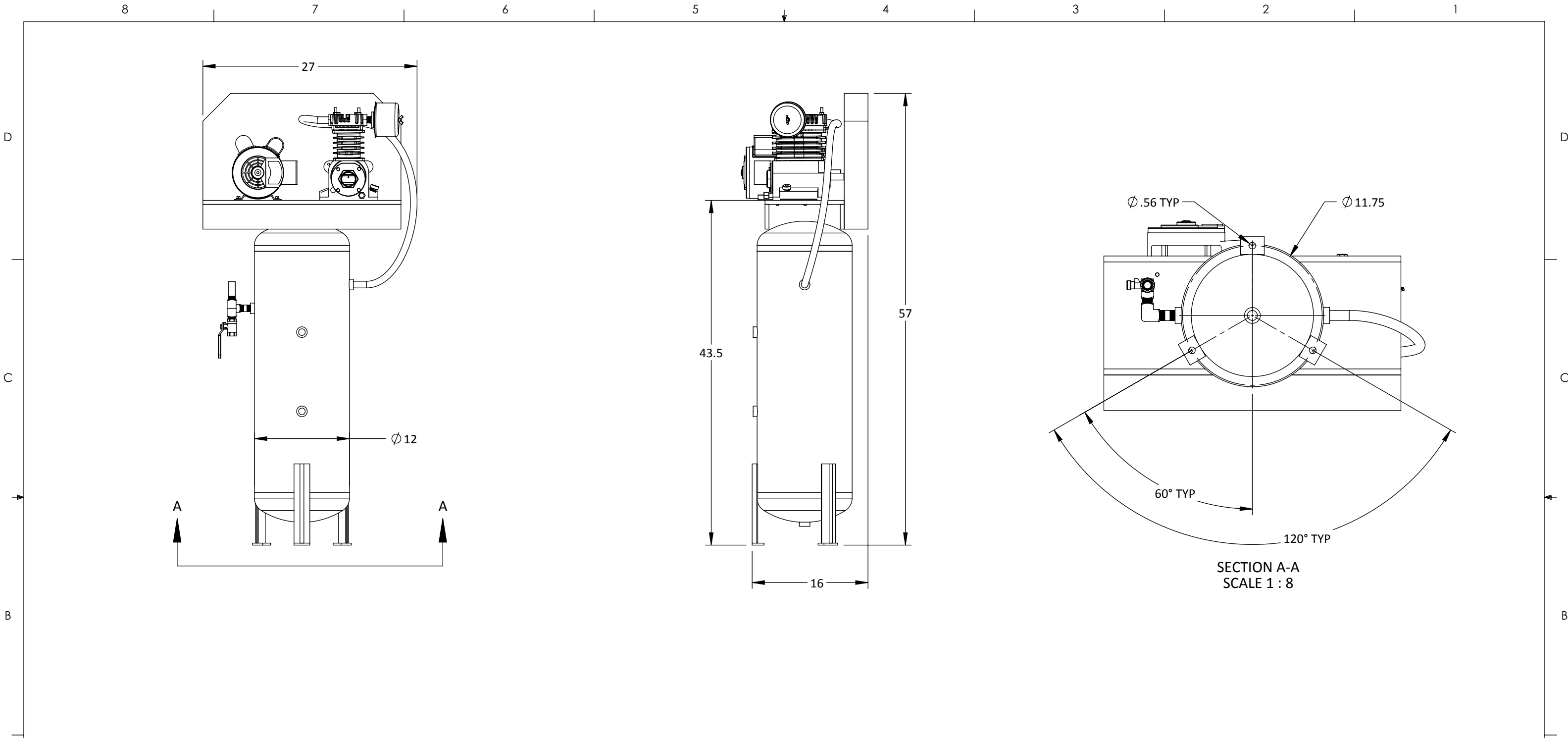
FRP-013, FILTER ELEMENT KIT FOR FPS-3250/5000-P-A		
STS PART #	DESCRIPTION	QTY.
900-300	PARTICULATE FILTER ELEMENT	1
900-310	COALESCING FILTER ELEMENT (MTP-95-548)	1
900-335	ABSORBING FILTER ELEMENT (MXP-95-987)	1


DESIGN DATA		
	FPS-3250	FPS-5000
PURITY	98% +	
N2 OUT PRESSURE	UP TO 80 PSI	
SHIPPING WEIGHT	243 LBS	303 LBS
ELECTRICAL	110V / 60HZ / 1PHASE, 7.1AMPS	

02	10326	-	UPDATED ELECTRICAL WITHIN THE DESIGN DATA TABLE	03/28/13	PJS	MRT
01	10320	-	UPDATED FRP KIT PART NUMBER AND ADDED EMERGENCY PORT BALLOON	03/12/18	PJS	MRT
00	-	-	RELEASE FOR USE IN SALES PACKAGES	01/09/18	PJS	MRT
REV	TASK#	SHEET	DESCRIPTION	DATE	DRAWN	APPR.
REVISIONS: ONLY THE LATEST 3 REVISIONS WILL BE SHOWN. OLDER REVISIONS CONSOLIDATED AND FILED.						

**PROPRIETARY AND CONFIDENTIAL**  
THE INFORMATION CONTAINED IN THIS DRAWING IS THE SOLE PROPERTY OF SOUTH-TEK SYSTEMS. ANY REPRODUCTION IN PART OR AS A WHOLE WITHOUT THE WRITTEN PERMISSION OF SOUTH-TEK SYSTEMS IS PROHIBITED.

MATERIAL:							TYP4P WITH AUTO BYPASS DETAIL DRAWING					DRAWN: MRT	APPROVED: MRT
FINISH:												DATE: 01/09/18	DATE: 04/25/18
WEIGHT:				PROJECT NAME:					SIZE: B	SCALE: 1:10	SHEET: 2 OF 2		
UNLESS OTHERWISE SPECIFIED DIMENSIONS ARE IN INCHES							NUMBER:					REVISION:	
ANGLES	X.	.X	.XX	.XXX	X/X<10'	X/X>10'	DD-TYP4P-P-A					02	
±.5°	±1	±.2	±.03	±.005	±1/16	±1/8							



AVAILABLE ELECTRICAL OPTIONS AND DESIGN DATA																				
STS PART #			CUSTOMER #		ELECTRICAL		MOTOR	AIR FLOW		WEIGHT										
2223-0006			STS-NF-C-2-J		120V / 60Hz / 1PHASE, 18.4 AMPS		2 HP	7.6 SCFM @ 120 - 140 PSI		250 LBS										
					230V / 60Hz / 1PHASE, 9.2 AMPS															
-	-	-	-			-	-	-	<div></div> <div>PROPRIETARY AND CONFIDENTIAL THE INFORMATION CONTAINED IN THIS DRAWING IS THE SOLE PROPERTY OF SOUTH-TEK SYSTEMS. ANY REPRODUCTION IN PART OR AS A WHOLE WITHOUT THE WRITTEN PERMISSION OF SOUTH-TEK SYSTEMS IS PROHIBITED.</div>											
-	-	-	-			-	-	-												
00		-	RELEASED			1/11/2018	JVN	JVN												
REV	TASK#	SHEET	DESCRIPTION			DATE	DRAWN	APPR.	UNLESS OTHERWISE SPECIFIED DIMENSIONS ARE IN INCHES			NUMBER: DD-AC-2-J		REVISION: 00						
REVISIONS: ONLY THE LATEST 3 REVISIONS WILL BE SHOWN. OLDER REVISIONS CONSOLIDATED AND FILED.																				
									ANGLES	X.	.X	.XX	.XXX	X/X<10'	X/X>10'					
									±.5 °	±1	±.2	±.03	±.005	±1/16	±1/8					
									MATERIAL:			(2-J) AIR COMPRESSOR DESIGN DATA AND DIMENSIONS			DRAWN: JVN		APPROVED: JVN			
									FINISH:						DATE: 01/11/18		DATE: 01/11/18			
									WEIGHT:			PROJECT NAME:			SIZE: B		SCALE: 1:16		SHEET: 1 OF 1	

8

7

6

5

4

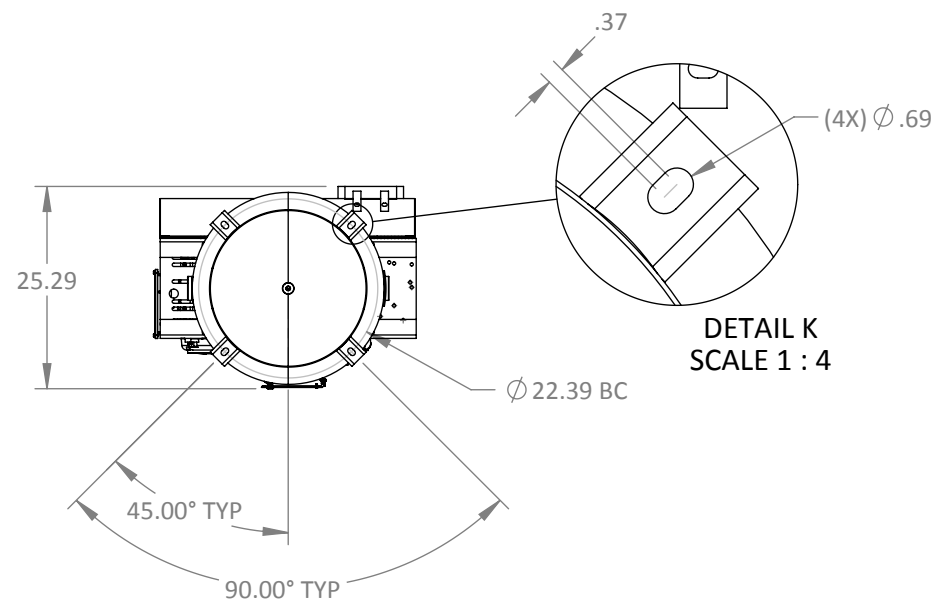
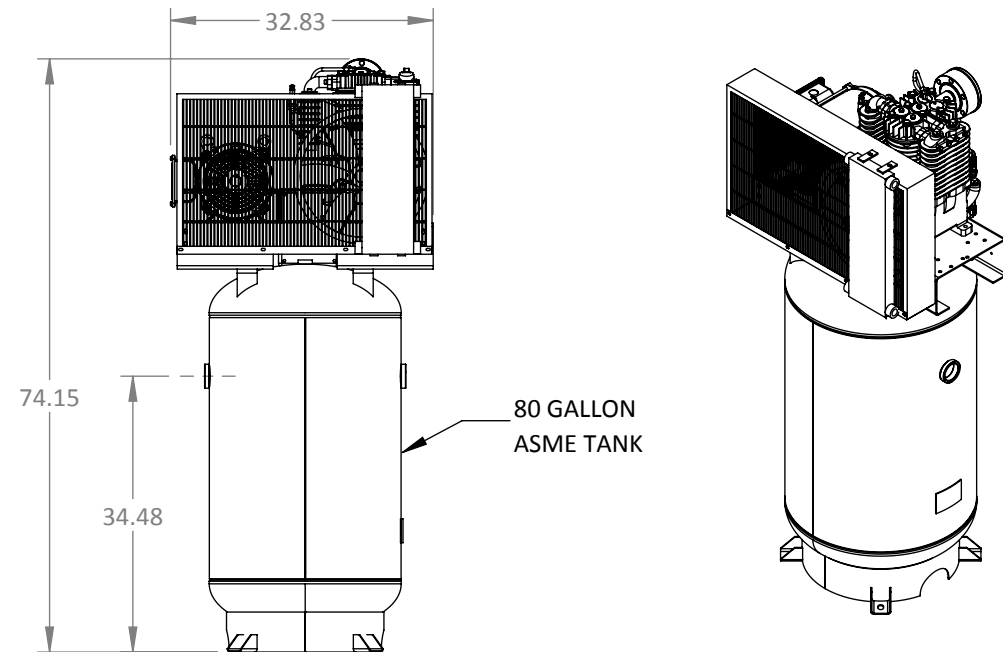
3

2

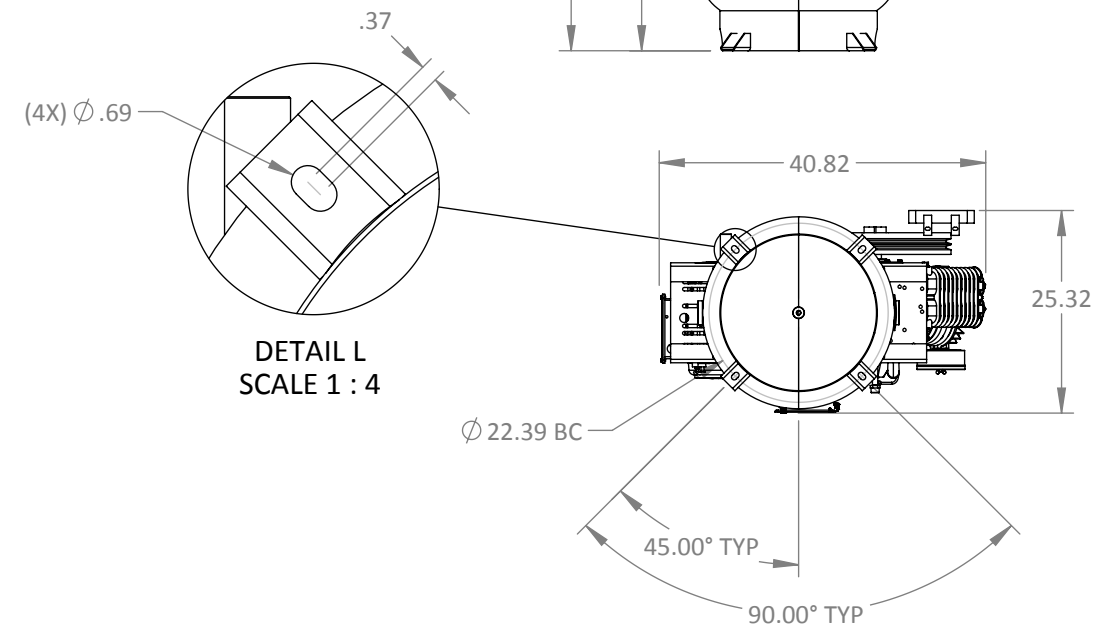
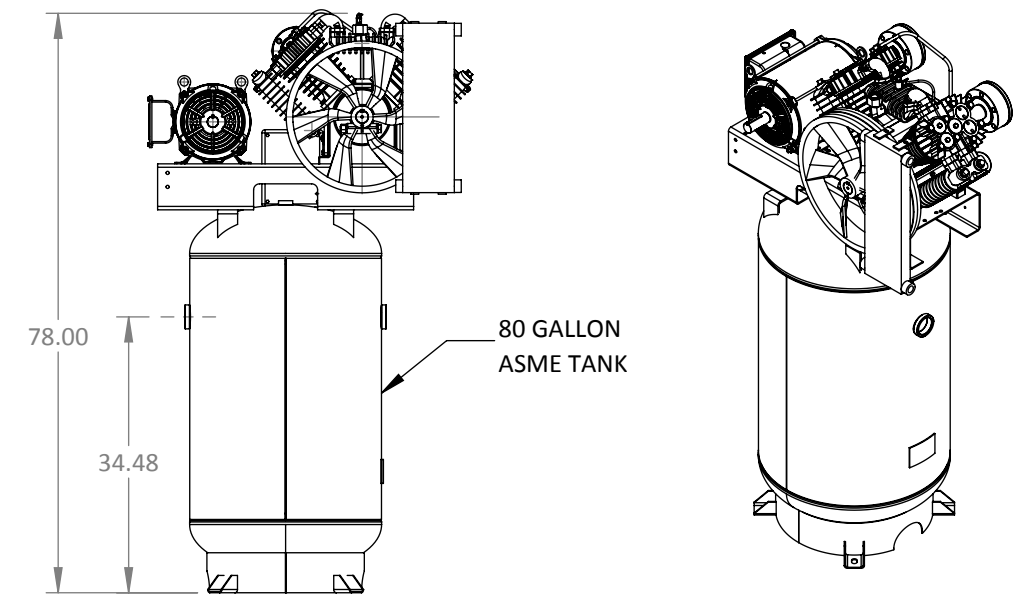
1



**STS-NF-C-5-CS**




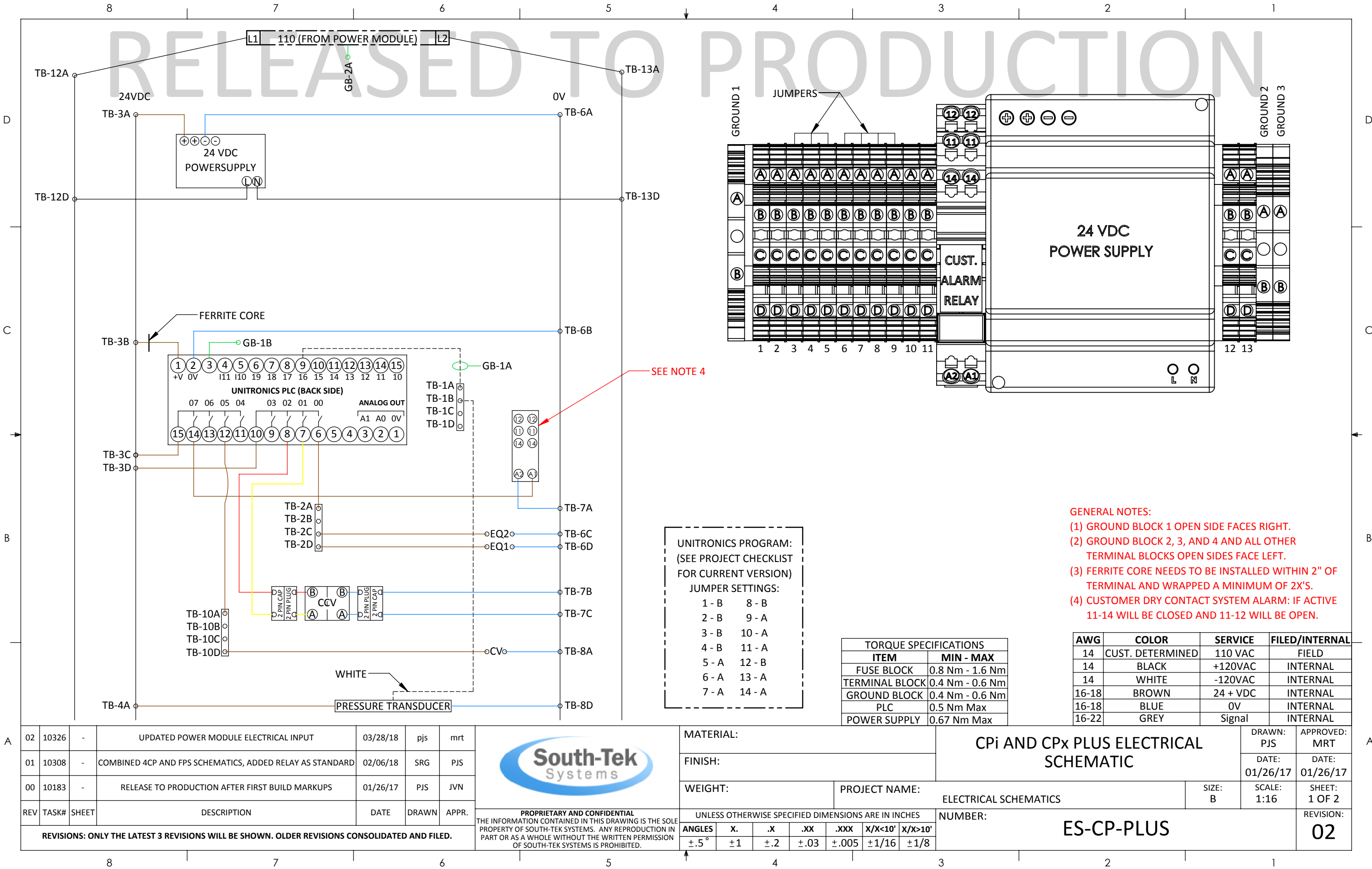
## STS-NF-C-7-CS AND STS-NF-C-7HD-CS



**80 GALLON VERTICAL ASME TANK  
ELITE W/ COOLER (MAG STARTER, AUTO TANK  
DRAIN, LOW OIL MONITOR, VIBRATION PADS)  
1/4" NPT AUTO-DRAIN CONNECTION PORT  
LOCATED NEAR BOTTOM OF THE TANK. PIPE  
TO SITE DRAIN.**

STS PART # (XXX) = VOLTAGE	CUSTOMER #	MOTOR (HP)	AIR FLOW (SCFM @175)	DIMENSIONS (L" X W" X H")	WEIGHT (LBS)	ELECTRICAL OPTIONS / AMPS	1 YEAR SERVICE KIT #	2 YEAR SERVICE KIT #
CS-050-(XXX)-16	STS-NF-C-5-CS	5	17.5	33 X 26 X 74	685	208-230V/1PH/24A	CS-050-075-KIT1	CS-050-KIT2
CS-050-(XXX)-36						230-460V/3PH/(16A-8A)		
CS-075-(XXX)-36	STS-NC-C-7-CS	7.5	24	41 X 26 X 78	885 lbs	230-460V/3PH/(18A-9A)	CS-075HD-100-KIT1	CS-075-KIT2
CS-075HD-(XXX)-36	STS-NF-C-7HD-CS		28			230-460V/3PH/(18A-9A)		CS-075HD-KIT2
CS-100-(XXX)-36	STS-NF-C-10-CS		35			230-460V/3PH/(28A-14A)		CS-100-KIT3

-	-	-	-	-	-	-		MATERIAL:		(CS) VERTICAL COMPRESSOR DESIGN DATA AND DIMENSIONS				DRAWN: JVN	APPROVED: JVN				
-	-	-	-	-	-	-		FINISH:						DATE: 01/12/18	DATE: 01/12/18				
0	-	-	RELEASED	1/11/18	JVN	JVN		WEIGHT:		PROJECT NAME:				SIZE: B	SCALE: 1:24	SHEET: 1 OF 1			
REV	TASK#	SHEET	DESCRIPTION	DATE	DRAWN	APPR.		PROPRIETARY AND CONFIDENTIAL THE INFORMATION CONTAINED IN THIS DRAWING IS THE SOLE PROPERTY OF SOUTH-TEK SYSTEMS. ANY REPRODUCTION IN PART OR AS A WHOLE WITHOUT THE WRITTEN PERMISSION OF SOUTH-TEK SYSTEMS IS PROHIBITED.		UNLESS OTHERWISE SPECIFIED DIMENSIONS ARE IN INCHES		NUMBER:				REVISION:			
REVISIONS: ONLY THE LATEST 3 REVISIONS WILL BE SHOWN. OLDER REVISIONS CONSOLIDATED AND FILED.										ANGLES	X.	.X	.XX	.XXX	X/X<10'	X/X>10'	DD-AC-CS		00
										+5°	+1	+2	+.03	+.005	+1/16	+1/8			



SEE NOTE 4

UNITRONICS PROGRAM:  
(SEE PROJECT CHECKLIST  
FOR CURRENT VERSION)  
JUMPER SETTINGS:  
1 - B    8 - B  
2 - B    9 - A  
3 - B    10 - A  
4 - B    11 - A  
5 - A    12 - B  
6 - A    13 - A  
7 - A    14 - A

TORQUE SPECIFICATIONS	
ITEM	MIN - MAX
FUSE BLOCK	0.8 Nm - 1.6 Nm
TERMINAL BLOCK	0.4 Nm - 0.6 Nm
GROUND BLOCK	0.4 Nm - 0.6 Nm
PLC	0.5 Nm Max
POWER SUPPLY	0.67 Nm Max

- GENERAL NOTES:
- (1) GROUND BLOCK 1 OPEN SIDE FACES RIGHT.
  - (2) GROUND BLOCK 2, 3, AND 4 AND ALL OTHER TERMINAL BLOCKS OPEN SIDES FACE LEFT.
  - (3) FERRITE CORE NEEDS TO BE INSTALLED WITHIN 2" OF TERMINAL AND WRAPPED A MINIMUM OF 2X'S.
  - (4) CUSTOMER DRY CONTACT SYSTEM ALARM: IF ACTIVE 11-14 WILL BE CLOSED AND 11-12 WILL BE OPEN.

AWG	COLOR	SERVICE	FILED/INTERNAL
14	CUST. DETERMINED	110 VAC	FIELD
14	BLACK	+120VAC	INTERNAL
14	WHITE	-120VAC	INTERNAL
16-18	BROWN	24 + VDC	INTERNAL
16-18	BLUE	0V	INTERNAL
16-22	GREY	Signal	INTERNAL

02	10326	-	UPDATED POWER MODULE ELECTRICAL INPUT	03/28/18	pjs	mrt
01	10308	-	COMBINED 4CP AND FPS SCHEMATICS, ADDED RELAY AS STANDARD	02/06/18	SRG	PJS
00	10183	-	RELEASE TO PRODUCTION AFTER FIRST BUILD MARKUPS	01/26/17	PJS	JVN
REV	TASK#	SHEET	DESCRIPTION	DATE	DRAWN	APPR.

REVISIONS: ONLY THE LATEST 3 REVISIONS WILL BE SHOWN. OLDER REVISIONS CONSOLIDATED AND FILED.



PROPRIETARY AND CONFIDENTIAL  
THE INFORMATION CONTAINED IN THIS DRAWING IS THE SOLE PROPERTY OF SOUTH-TEK SYSTEMS. ANY REPRODUCTION IN PART OR AS A WHOLE WITHOUT THE WRITTEN PERMISSION OF SOUTH-TEK SYSTEMS IS PROHIBITED.

MATERIAL:

FINISH:

WEIGHT:

PROJECT NAME:

CPI AND CPx PLUS ELECTRICAL SCHEMATIC

DRAWN: PJS	APPROVED: MRT
DATE: 01/26/17	DATE: 01/26/17

UNLESS OTHERWISE SPECIFIED DIMENSIONS ARE IN INCHES

ANGLES	X.	.X	.XX	.XXX	X/X<10'	X/X>10'
±.5°	±1	±.2	±.03	±.005	±1/16	±1/8

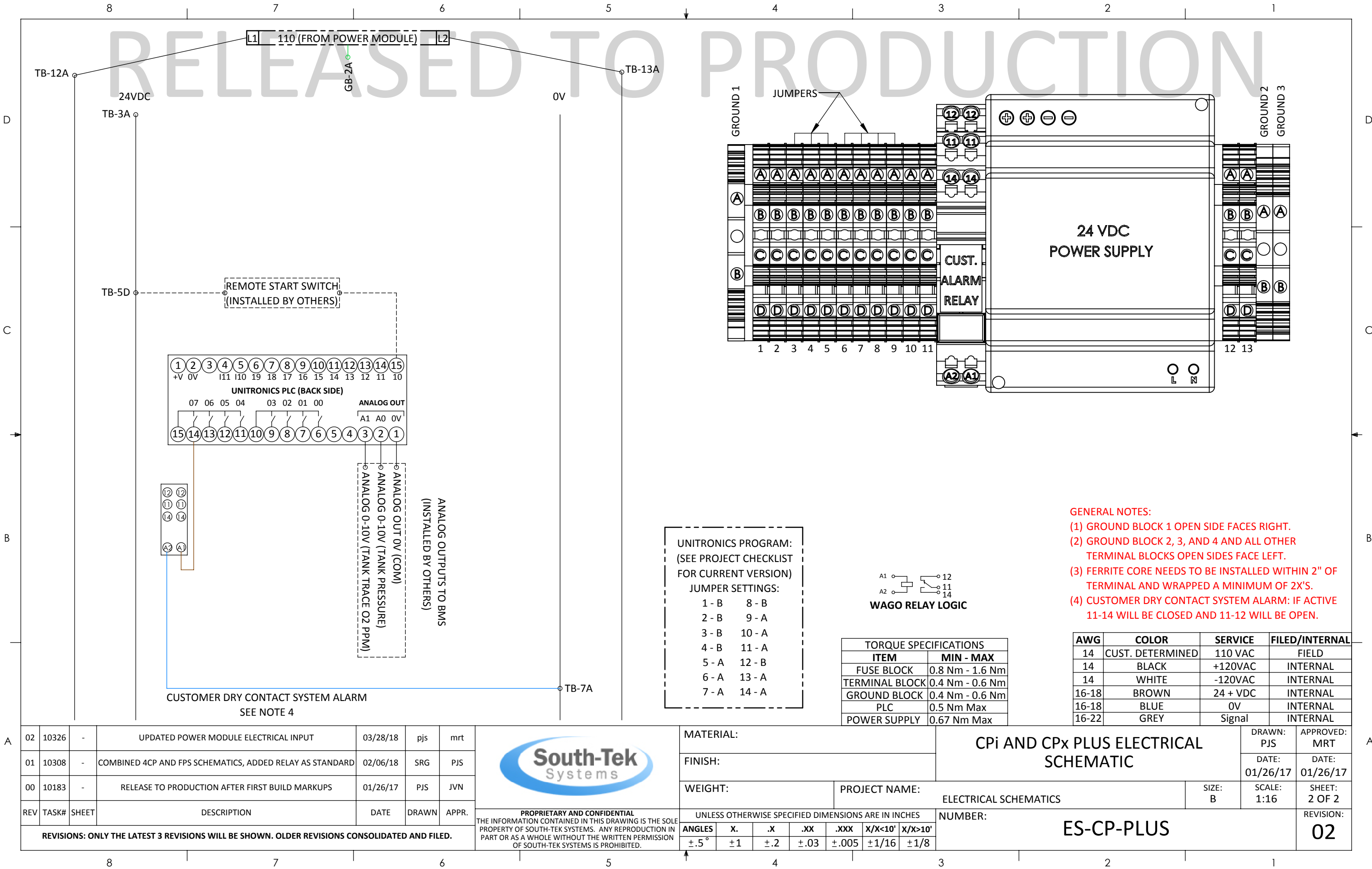
ELECTRICAL SCHEMATICS

NUMBER:

ES-CP-PLUS

REVISION:

02



UNITRONICS PROGRAM:  
(SEE PROJECT CHECKLIST  
FOR CURRENT VERSION)

JUMPER SETTINGS:

1 - B	8 - B
2 - B	9 - A
3 - B	10 - A
4 - B	11 - A
5 - A	12 - B
6 - A	13 - A
7 - A	14 - A

WAGO RELAY LOGIC

TORQUE SPECIFICATIONS	
ITEM	MIN - MAX
FUSE BLOCK	0.8 Nm - 1.6 Nm
TERMINAL BLOCK	0.4 Nm - 0.6 Nm
GROUND BLOCK	0.4 Nm - 0.6 Nm
PLC	0.5 Nm Max
POWER SUPPLY	0.67 Nm Max

- GENERAL NOTES:
- (1) GROUND BLOCK 1 OPEN SIDE FACES RIGHT.
  - (2) GROUND BLOCK 2, 3, AND 4 AND ALL OTHER TERMINAL BLOCKS OPEN SIDES FACE LEFT.
  - (3) FERRITE CORE NEEDS TO BE INSTALLED WITHIN 2" OF TERMINAL AND WRAPPED A MINIMUM OF 2X'S.
  - (4) CUSTOMER DRY CONTACT SYSTEM ALARM: IF ACTIVE 11-14 WILL BE CLOSED AND 11-12 WILL BE OPEN.

AWG	COLOR	SERVICE	FILED/INTERNAL
14	CUST. DETERMINED	110 VAC	FIELD
14	BLACK	+120VAC	INTERNAL
14	WHITE	-120VAC	INTERNAL
16-18	BROWN	24 + VDC	INTERNAL
16-18	BLUE	0V	INTERNAL
16-22	GREY	Signal	INTERNAL

02	10326	-	UPDATED POWER MODULE ELECTRICAL INPUT	03/28/18	pjs	mrt
01	10308	-	COMBINED 4CP AND FPS SCHEMATICS, ADDED RELAY AS STANDARD	02/06/18	SRG	PJS
00	10183	-	RELEASE TO PRODUCTION AFTER FIRST BUILD MARKUPS	01/26/17	PJS	JVN
REV	TASK#	SHEET	DESCRIPTION	DATE	DRAWN	APPR.
REVISIONS: ONLY THE LATEST 3 REVISIONS WILL BE SHOWN. OLDER REVISIONS CONSOLIDATED AND FILED.						

PROPRIETARY AND CONFIDENTIAL

THE INFORMATION CONTAINED IN THIS DRAWING IS THE SOLE PROPERTY OF SOUTH-TEK SYSTEMS. ANY REPRODUCTION IN PART OR AS A WHOLE WITHOUT THE WRITTEN PERMISSION OF SOUTH-TEK SYSTEMS IS PROHIBITED.

MATERIAL:

FINISH:

WEIGHT:

PROJECT NAME:

ELECTRICAL SCHEMATICS

NUMBER:

ES-CP-PLUS

CPI AND CPx PLUS ELECTRICAL SCHEMATIC

SIZE: B

SCALE: 1:16

SHEET: 2 OF 2

REVISION: 02

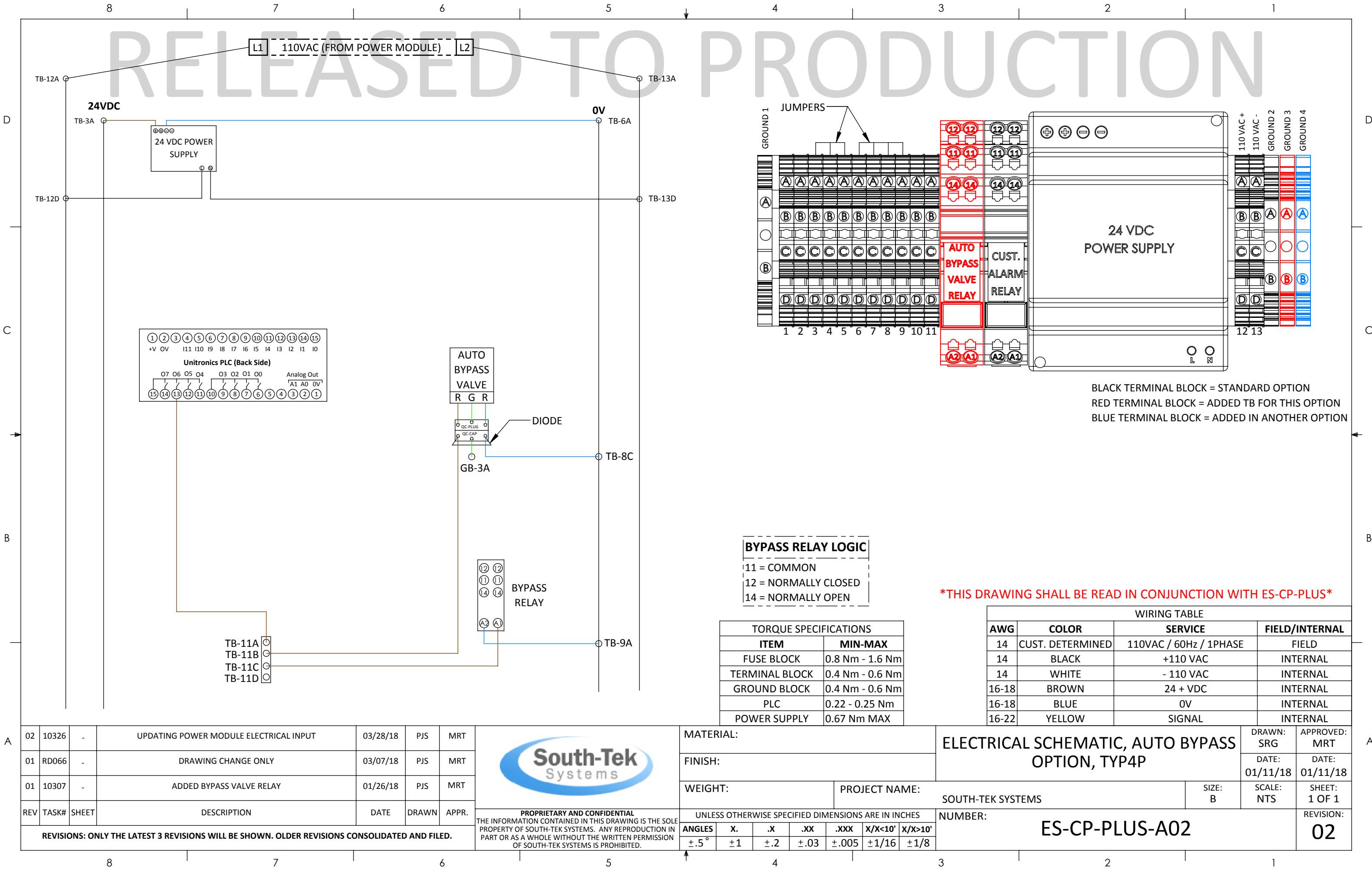
DRAWN: PJS

DATE: 01/26/17

APPROVED: MRT

DATE: 01/26/17





02	10326	-	UPDATING POWER MODULE ELECTRICAL INPUT	03/28/18	PJS	MRT
01	RD066	-	DRAWING CHANGE ONLY	03/07/18	PJS	MRT
01	10307	-	ADDED BYPASS VALVE RELAY	01/26/18	PJS	MRT
REV	TASK#	SHEET	DESCRIPTION	DATE	DRAWN	APPR.

**PROPRIETARY AND CONFIDENTIAL**  
THE INFORMATION CONTAINED IN THIS DRAWING IS THE SOLE PROPERTY OF SOUTH-TEK SYSTEMS. ANY REPRODUCTION IN PART OR AS A WHOLE WITHOUT THE WRITTEN PERMISSION OF SOUTH-TEK SYSTEMS IS PROHIBITED.

MATERIAL:							ELECTRICAL SCHEMATIC, AUTO BYPASS OPTION, TYP4P				DRAWN: SRG		APPROVED: MRT		
FINISH:											DATE: 01/11/18		DATE: 01/11/18		
WEIGHT:				PROJECT NAME: SOUTH-TEK SYSTEMS					SIZE: B		SCALE: NTS		SHEET: 1 OF 1		
UNLESS OTHERWISE SPECIFIED DIMENSIONS ARE IN INCHES							NUMBER: ES-CP-PLUS-A02							REVISION: 02	
ANGLES	X.	.X	.XX	.XXX	X/X<10'	X/X>10'									
±.5°	±1	±.2	±.03	±.005	±1/16	±1/8									

REVISIONS: ONLY THE LATEST 3 REVISIONS WILL BE SHOWN. OLDER REVISIONS CONSOLIDATED AND FILED.