

HANGARS



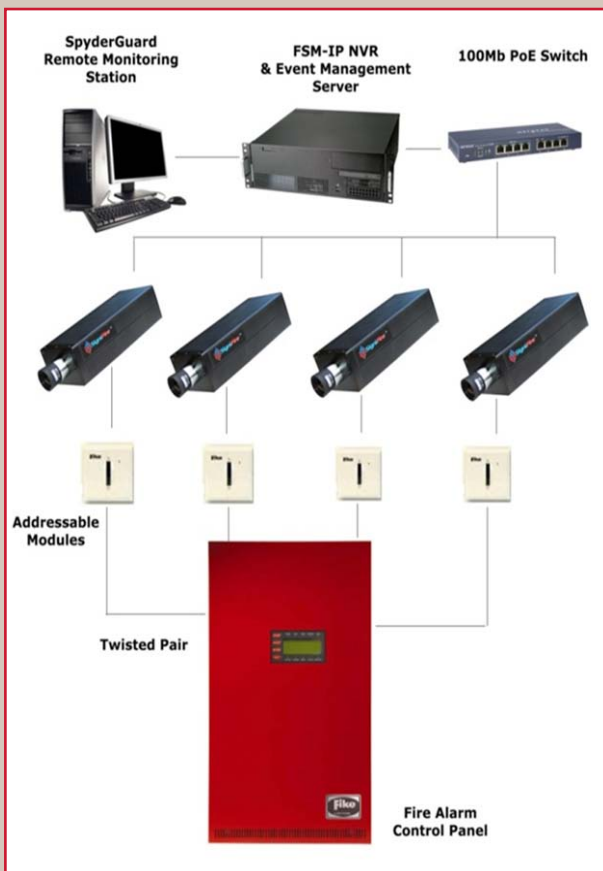
 **SigniFire**[™]
Fike[®]

HANGARS

While the loss of an airplane hangar due to fire may be costly, it is minimal compared to the potential loss of the aircraft inside. Hundreds of millions of dollars, plus loss of revenue due to disruption of service, can devastate a business. SigniFire provides early detection and the opportunity for early suppression or nuisance rejection before an expensive Aqueous Film-Forming Foam (AFFF) dump.

CHALLENGING ENVIRONMENT

Hangar applications are a difficult environment in which to provide detection because of the sudden changes introduced when hangar doors open and close to the outside. Additionally the large volume space can result in detection delays with more traditional smoke detection technologies. These factors along with the many potential ignition sources make hangars an ideal candidate for SigniFire early detection capabilities.



WHY VIDEO FLAME AND SMOKE DETECTION?

Video smoke and flame detection has several advantages over traditional types of smoke detection.

- **EARLIER DETECTION** - Because the cameras 'see' the fire at the source, they detect earlier than traditional smoke detectors that require the smoke to reach the sensor.
- **IMMEDIATE SITUATIONAL AWARENESS** - Because the camera is a true network security camera, images can be viewed in real time at a guard station so an immediate suppression response can be initiated
- **LESS DEVICES TO INSTALL**- each SigniFire camera can cover a large volume which will lead to fewer sensors causing reduced installation and maintenance costs

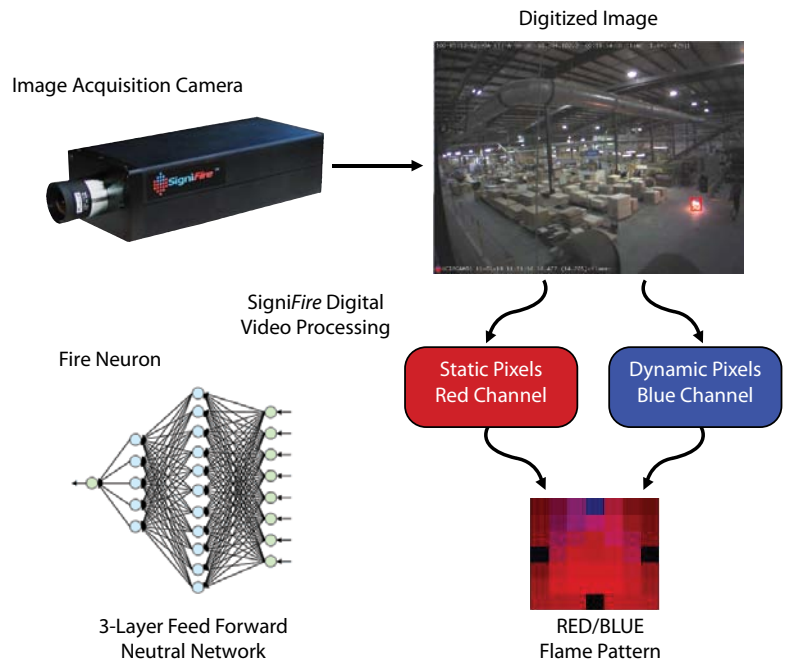


HANGARS

HOW DOES SIGNIFIRE WORK?

Artificial Intelligence using Video Analytics Software

- Scans 640 x 480 pixel images at a rate of 15 times a second
- 4.5 million data points analyzed by Texas Instruments Digital Signal Processor
- Software develops temporal patterns based on pixel DSP filters
- Patterns processed by Neural Network to identify flame and smoke
- Alarms communicated through dry contacts or IP based video management



WHICH FIRE PROTECTION SYSTEMS HAVE BEEN TRADITIONALLY USED IN CULTURAL PROPERTY PROTECTION?

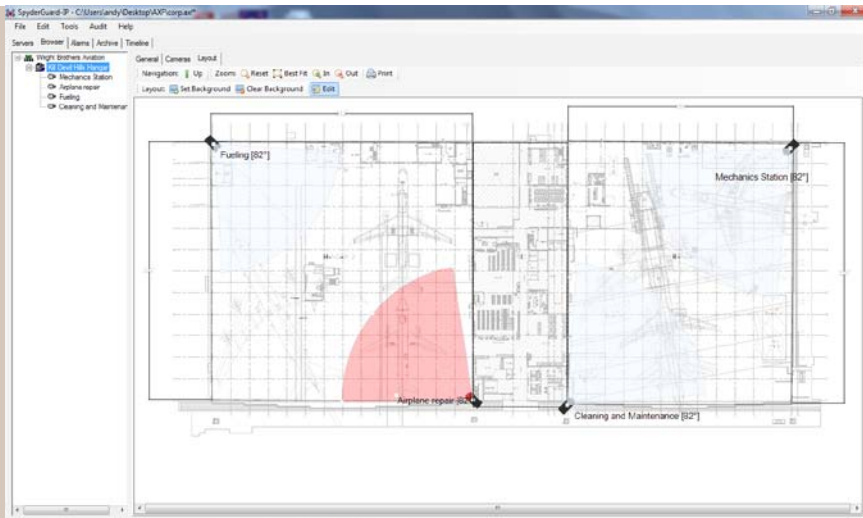
SYSTEM	COMMENTS
SPRINKLERS	Sprinklers are typically mandated by code and are triggered based on high temperature. They are designed to save the building shell but not the contents of a building
LINEAR HEAT DETECTORS	Linear heat can be used as a pre-action for sprinklers but are again activated by high temperature and will not detect fires at the early stage.
BEAM DETECTORS	Beam detectors are placed at ceiling level and can cause nuisance alarms based on blockage or misalignment. High ceilings can mean smoke stratification and diffusion issues.
SPOT DETECTORS	Spot detectors are usually either photo electric or ionization and are placed at the ceiling level which delays detection of smoke.
ASPIRATED SMOKE DETECTORS	Aspirated smoke detection (where smoke is drawn through a series of tubes back to a central detector) is normally faster than spot and beam detectors but still can have issues with smoke stratification and diffusion as well as smoke transport time and installation costs.

VIDEO SMOKE AND FLAME DETECTION PROVIDES A BETTER SOLUTION FOR HANGARS THAN TRADITIONAL SMOKE DETECTION PRODUCTS. ADDITIONAL SECURITY IS ALSO PROVIDED AS THE CAMERA CAN DETECT UNAUTHORIZED INTRUSIONS.

HANGARS

APPLICATIONS

- Airports
- Hangars
- Terminals
- Airport Atriums
- Aerospace Manufacturing



APPROVALS:



THE TOTAL SOLUTION

Fike has long been known for being a leader in service, support and delivery in the fire protection industry. No matter what the concern, no matter what the time, we make it easy to reach a trained, knowledgeable Fike representative who will assist you quickly. Combine that with the most advanced technology available in fire alarm systems, competitively priced to meet all your application needs, and you have a total solution for all your fire alarm and fire protection needs.

FIKE GLOBAL MANUFACTURING, SALES AND SERVICE

AMERICAS

FIKE VIDEO IMAGE DETECTION

Sparks, MD, USA
Tel: +1-410-472-6590
Email: signifire@fike.com

FIKE CORPORATION

Blue Springs, MO, USA
Tel: +1-800-979-3453
Email: fpssales@fike.com

FIKE LATINA LTDA (MERCOSUR)

Jundiai, Brazil
Tel: +55-11-4525-5900
Email: vendas@fike.com.br

CARIBBEAN, CENTRAL, SOUTH AMERICA

Houston, TX, USA
Tel: +1-281-895-0756
Email: ccsasales@fike.com

EUROPE

FIKE SAFETY TECHNOLOGY

Cwmbran, United Kingdom
Tel: +44 (0) 1633 865558
Email: fstinfo@fike.com

ASIA

FIKE ASIA PACIFIC SDN BHD

Selangor Darul Ehsan, Malaysia
Tel: +60-3-7859-1462
Email: fikeap@fike.com

MIDDLE EAST

FIKE CORPORATION DUBAI

Dubai, UAE
Tel: +971 4 (0) 3866455
Email: fike.dubai@fike.com



SigniFire, Fike and Fike Corporation are trademarks or registered trademarks of Fike Corporation. All other trademarks, trade names or company names referenced herein are the property of their respective owners.

©Copyright 2012, Fike Corporation. All rights reserved. Form No. SFAP 002 (0312). Printed in the U.S.A.