

DMX

MODULAR TWO WAY VENT FOR CHEMICAL AGENTS.



NEXT DAY DELIVERY
if order is processed before 12pm

OVERVIEW

The DMX is a 2 hour fire rated, ultra high sealed, modular two way pressure vent specifically designed for FK-5-1-12. (Novec).

Room sealing for FK-5-1-12 (Novec) can be challenging, especially with small rooms. Whilst this may have more to do with an anomaly of integrity testing small rooms, the new DMX range of vents have been specifically designed to have near zero leakage when closed in order to help make room sealing an easier task.



This patent applied for design uses two perimeter sealed doors to provide both positive and negative pressure relief with the larger 'negative' pressure door having a full perimeter foam seal and the smaller 'positive' pressure door utilizing a unique double skin magnetic seal system that provides a full perimeter seal when closed yet opens at the low 100 pascal range required to protect a structure from any over or under pressure created by a gas suppression discharge.

Note. FK-5-1-12 produces a far greater negative pressure in a room than positive.

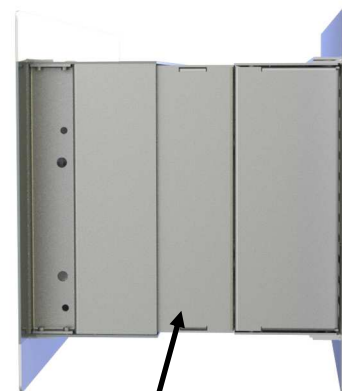
Designed from the ground up, the new DMX vent is a flush mount modular system that fixes from inside the vent so no drilling or external screws required.



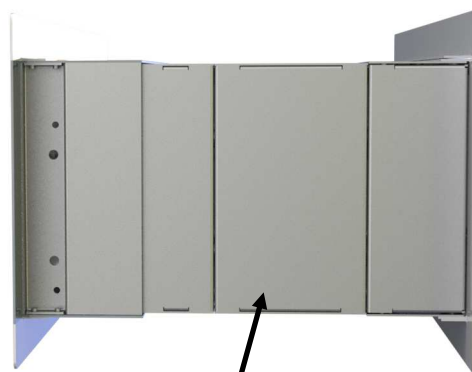
Internal Fixing Bolts



Produced to fit any thickness of wall. The DMX wall liner extensions (WLX) just simply bolts together so you just use as many as is required for any wall thickness.



WLX 50 (50 mm)



WLX 100 (100 mm)

Wall liner extensions (WLX) supplied separately.

To choose which WLX units to order please see the chart on page 4.

The DMX is a modular system, so for larger venting requirements, the units can be 'stacked'.

This design also includes an easy to install modular external louvre system.

See DMX installation guide for details.



All external louvre parts are made from powder coated stainless steel for extra corrosion protection.



The DMX currently comes in 2 sizes. DMX 300 and DMX 500. 300 and 500mm wide respectively. The DMX 300 is sized to fit between two wall studs with standard 16" centers.

DMX 300

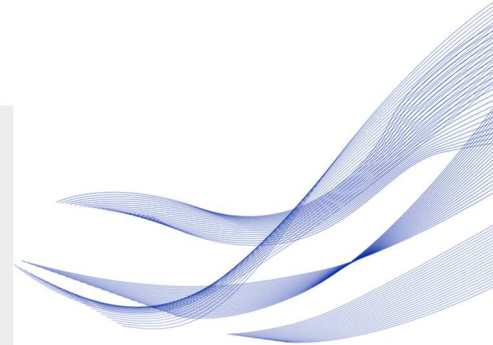


DMX 500



Key Features

- ultra low leakage.
- two way venting.
- designed specifically for Novec.
- 2 hour fire rated.
- modular design, makes multiple sized vents.
- flush mount, easy installation.
- DMX 300 sized to fit between 2 wall studs.
- extra secure, no fixings accessible from the outside wall side of the vent.
- will fit any wall thickness (with appropriate WLX units).
- stainless steel powder coated external louvres.
- design fully blast tested in the AFP blast simulator.
- patent applied design.

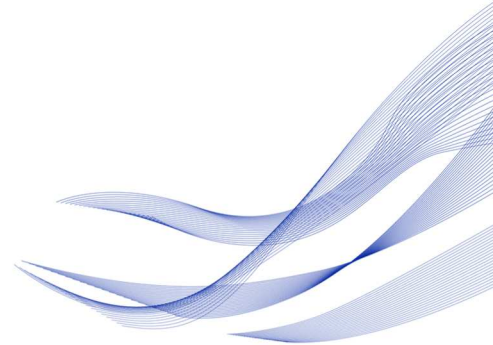


Product Specification				
Product code	DMX 300 Kit	DMX 500 Kit	DMX 300 L (Louver)	DMX 500 L (Louver)
Free Vent Area	-0.042/+0.008m ²	-0.064/+0.017m ²	-0.042/+0.008m ²	-0.064/+0.017m ²
WxHxD	410x230x95 mm	610x230x95 mm	490x240x100 mm	690x240x100 mm
Weight	7kg	8.5kg	3.5kg	4kg

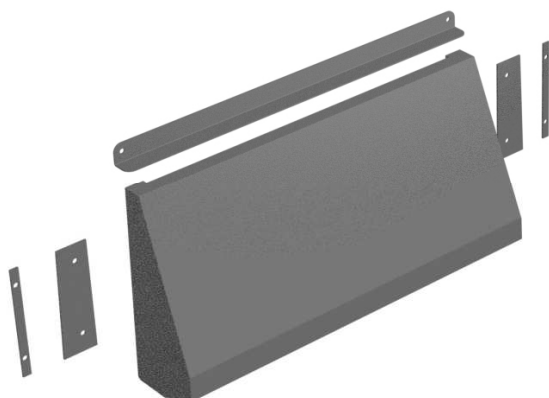
Wall Liner Extensions (WLX)				
Product code	DMX 300-WLX 50	DMX 300-WLX 100	DMX 500-WLX 50	DMX 500-WLX 100
WxHxD	345x165x50 mm	354x165x100 mm	545x165x50 mm	545x165x100 mm
Weight	0.85kg	1.5kg	1.2kg	2.3kg



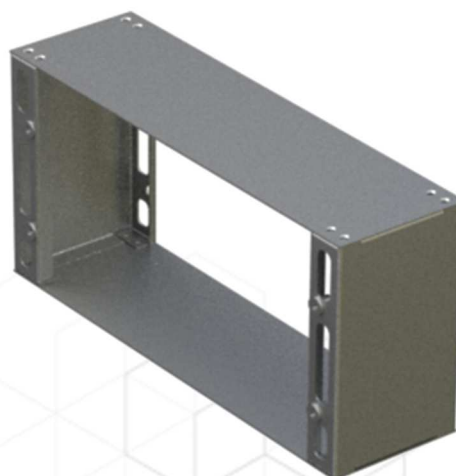
DMX 300 KIT



DMX 300-WLX 50



DMX 300L (LOUVER)



DMX 300-WLX 100mm

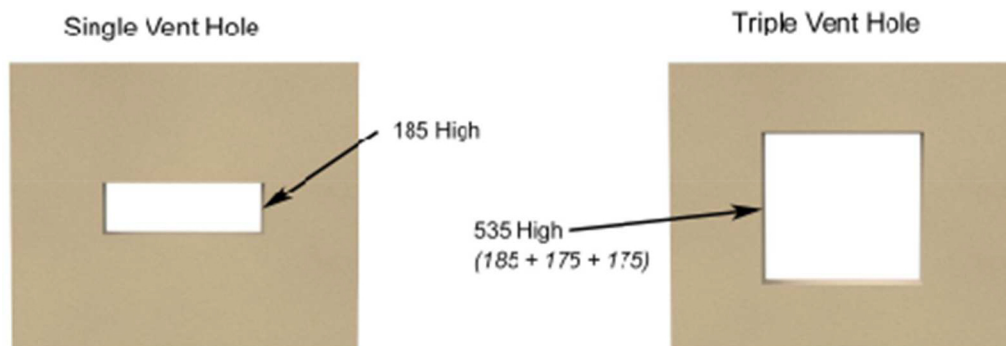
Wall Hole Cutout

DMX 300 SINGLE VENT CUTOUT HOLE 360 wide x 185 High

- For each Additional unit add 175 mm to the height eg 3 x DMX300 units require a 360 wide x 535 high (185 + 175 + 175) cutout hole.

DMX 500 SINGLE VENT CUTOUT HOLE 560 wide x 185 High

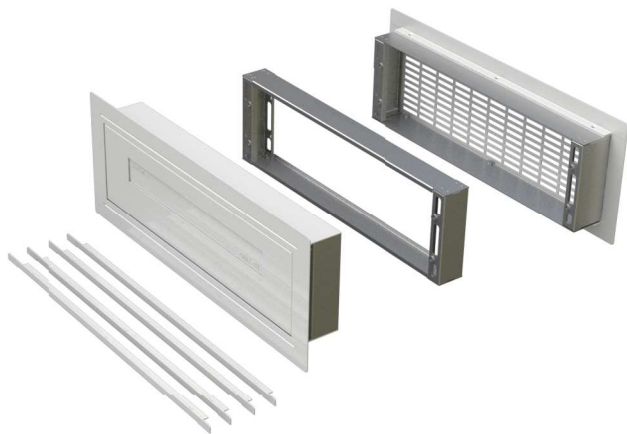
- For each Additional unit add 175 mm to the height eg 3 x DMX500 units require a 560 wide x 535 high (185 + 175 + 175) cutout hole.



WALL THICKNESS WLX SELECTION						
Wall thickness	DMX 300 KIT	DMX 300 WLX 50	DMX 300 WLX 100	DMX 500 KIT	DMX 500 WLX 50	DMX 500 WLX 100
95-190 mm	1			1		
190-240 mm	1	1		1	1	
240-290 mm	1		1	1		1
290-340 mm	1	1	1	1	1	1
340-390 mm	1		2	1		2

Example

For a wall between 190mm and 240mm you would need
 1xDMX300 / 500 kit and 1xDMX300 / 500 WLX 50



DMX 500 KIT



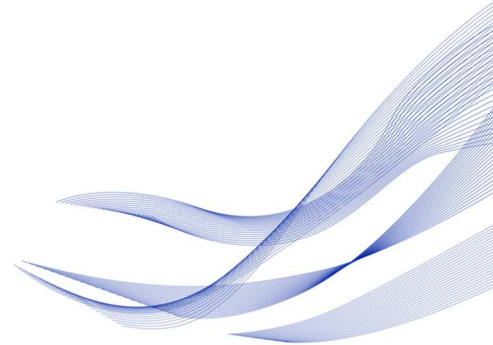
DMX 500 L-Louver

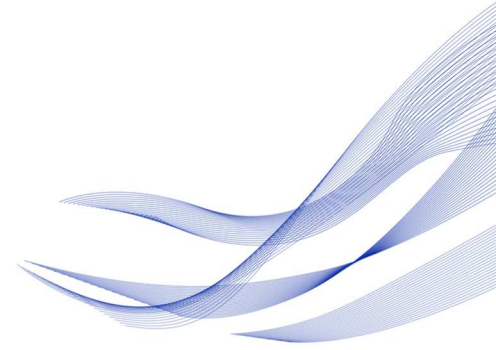


DMX 500-WLX 50



DMX 500-WLX 100mm





Performance Certification

Fire Rating Certification

European Approval

2 Hour Fire rated for integrity

Tested by D.U.L Laboratories Ltd.

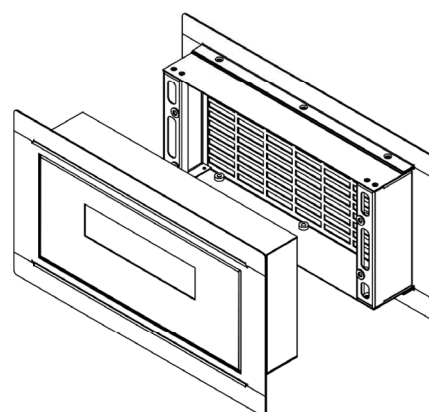
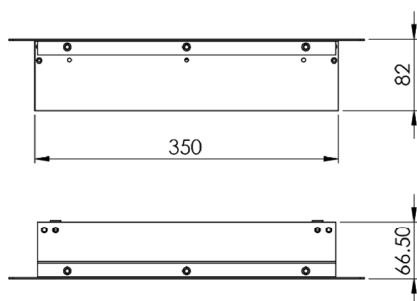
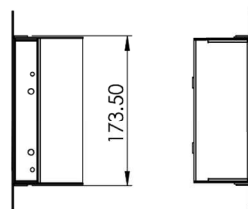
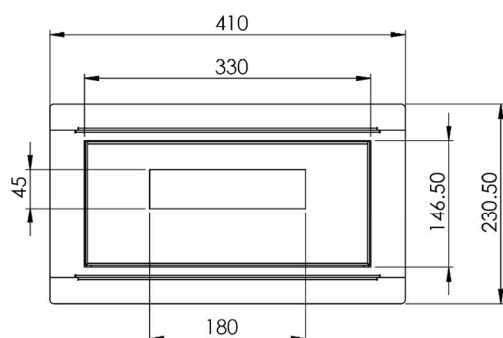
Standard Type: BS476 Part 20 1987

BS/EN 1366-3:2005

BS/EN 1363-1:2000

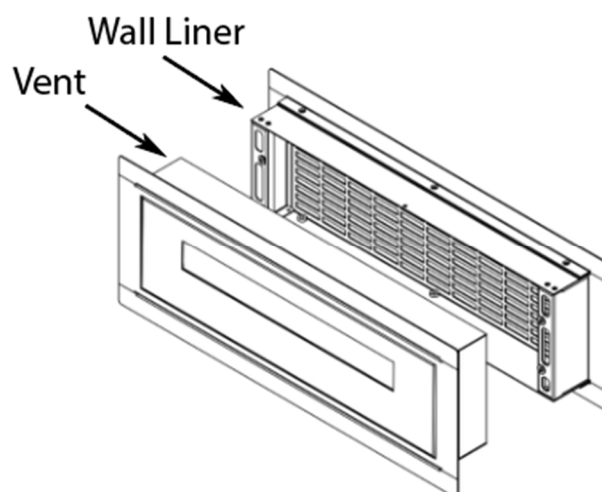
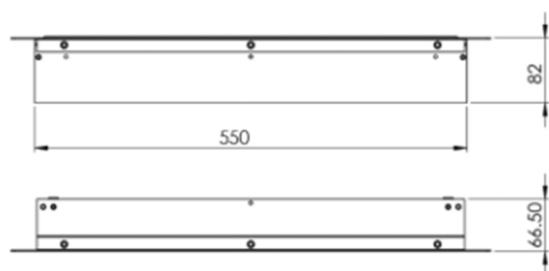
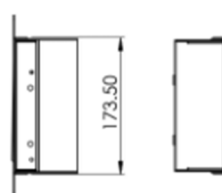
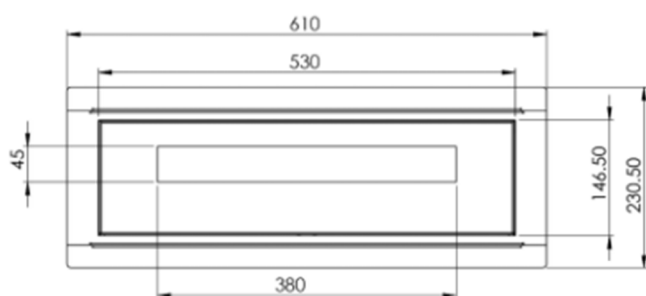
BS/EN 13501-2:2004

DMX 300

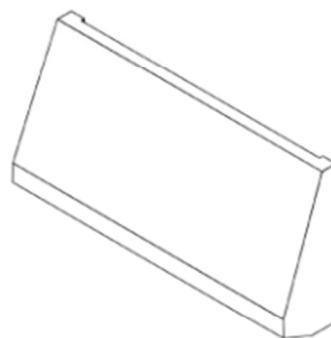
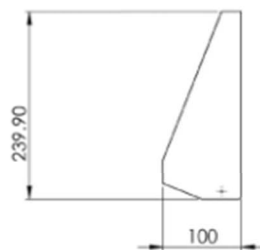
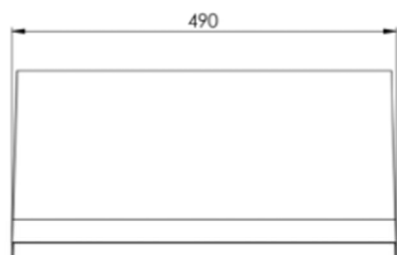


MODULAR TWO WAY VENT

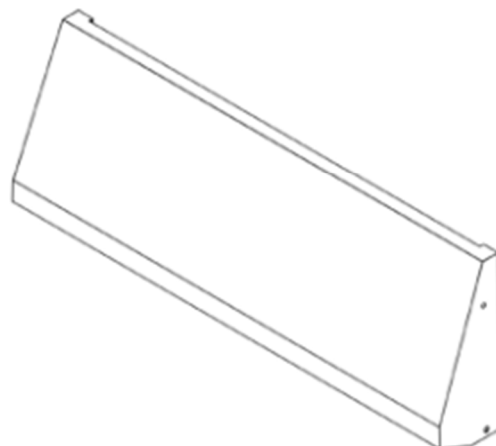
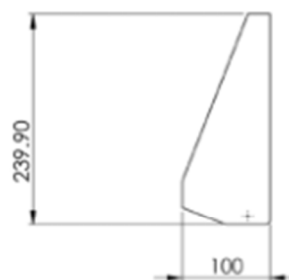
DMX 500



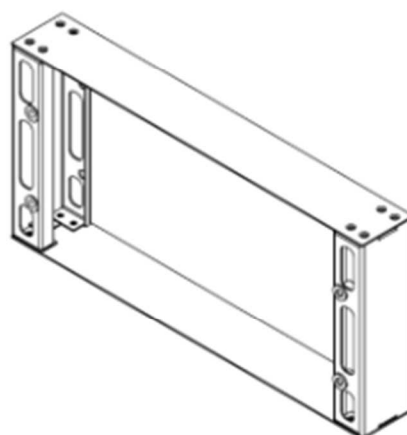
DMX 300L (Louver)



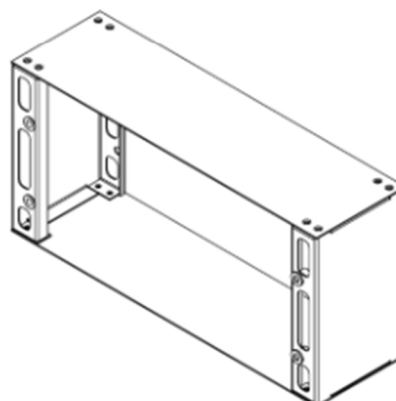
DMX 500L (Louver)



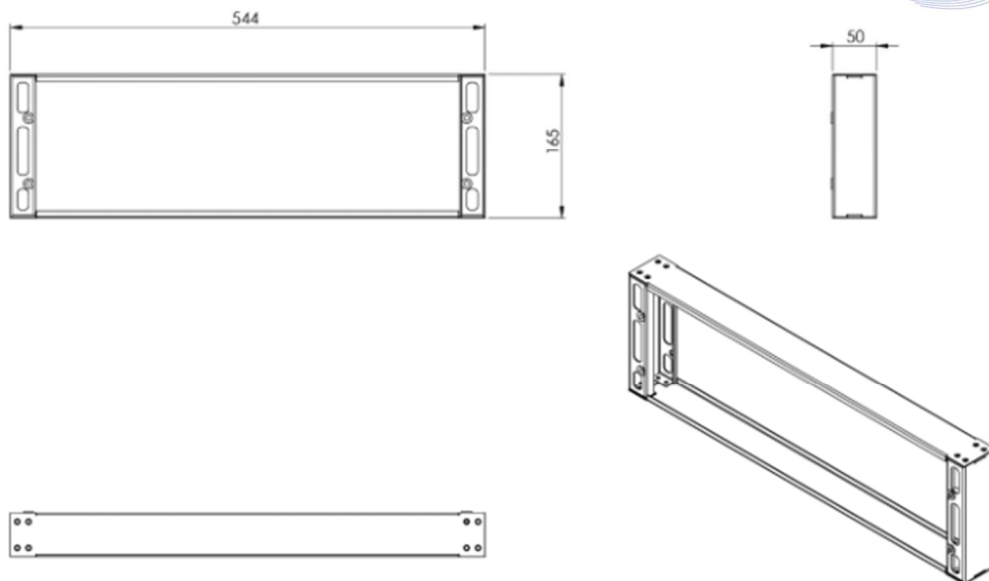
DMX 300 WLX 50



DMX 300 WLX 100



DMX 500 WLX 50



MODULAR TWO WAY VENT

DMX 500 WLX 100

